



Page

170

170

170

171

171

171

172

173

174

175

176

177

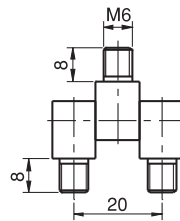


## SIDE HINGE (10 mm)

090

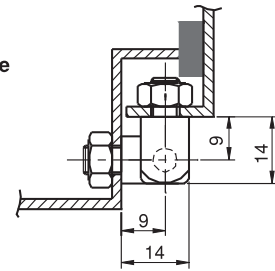


LH/RH



Hinge Rotation Angle

0 180°



- Side mounted hinge
- Three 10mm brass parts supplied separately. For different dims contact Mesan

## MATERIAL

M

Brass

3

## FINISH

F

No Finish

0

Nickel

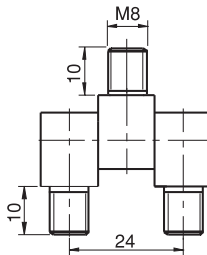
4

## SIDE HINGE (10 mm)

091

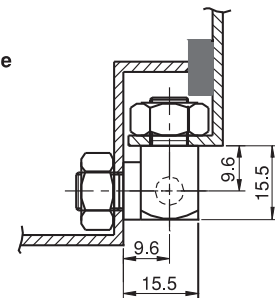


LH/RH



Hinge Rotation Angle

0 180°



- Side mounted hinge
- Three 12mm brass parts supplied separately. For different dims contact Mesan

## MATERIAL

M

Brass

3

## FINISH

F

No Finish

0

Nickel

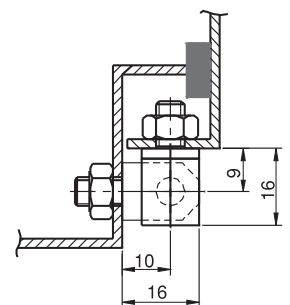
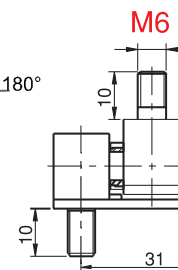
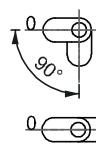
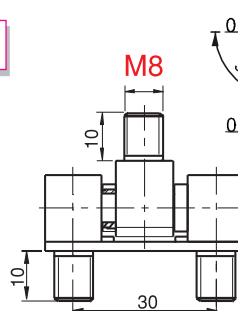
4

## SIDE HINGE (12 mm)

092



LH/RH

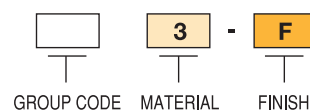


M8 → 092 M-F-8-90°  
092 M-F-8-180°

M6 → 092 M-F-6-90°  
092 M-F-6-180°

- Side mounted hinge
- 12 mm parts and bearings are brass .Parts are assembled by fixing plate.For different dimensions, please contact Mesan.
- 90° and 180° angle versions are available

## PRODUCT CODE



GROUP CODE

MATERIAL

FINISH

## MATERIAL

M

Brass

3

## FINISH

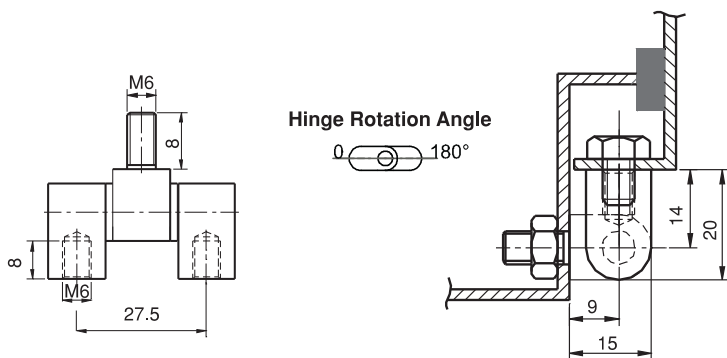
F

No Finish

0

Chrome

1



| MATERIAL | M |
|----------|---|
| Brass    | 3 |

| FINISH | F |
|--------|---|
| Chrome | 1 |

192

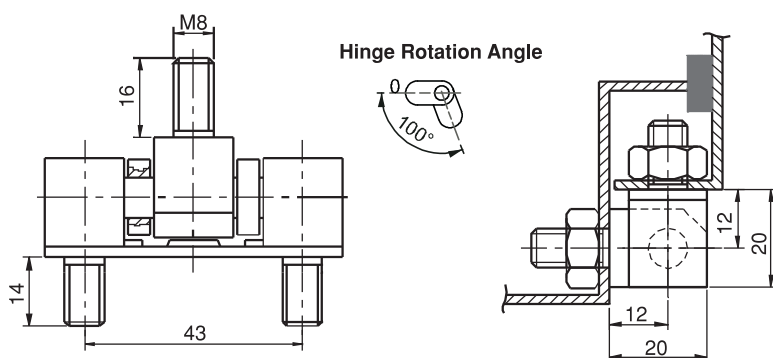
SIDE HINGE (12 mm)



LH/RH



- Side mounted hinge
- 12 mm parts and bearings are brass .Parts are tightly fitted.



| MATERIAL | M |
|----------|---|
| Brass    | 3 |

| FINISH    | F |
|-----------|---|
| No Finish | 0 |
| Chrome    | 1 |

093

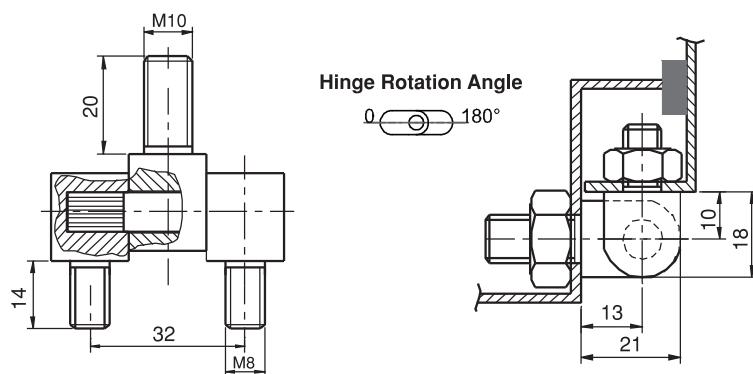
SIDE HINGE (16 mm)



LH/RH



- Side mounted hinge
- 16 mm parts and bearings are brass .Parts are assembled by fixing plate.



#### PRODUCT CODE

|            |          |   |        |
|------------|----------|---|--------|
|            | 3        | - | F      |
| GROUP CODE | MATERIAL |   | FINISH |

| MATERIAL | M |
|----------|---|
| Brass    | 3 |

| FINISH | F |
|--------|---|
| Chrome | 1 |

193

SIDE HINGE (16 mm)



LH/RH



- Side mounted hinge
- 16 mm parts are brass .Parts are tightly fitted.

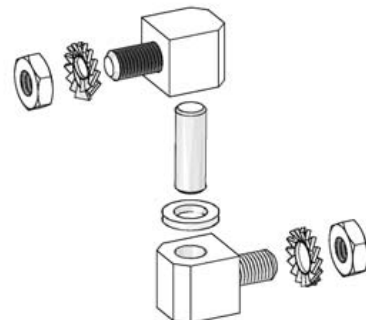
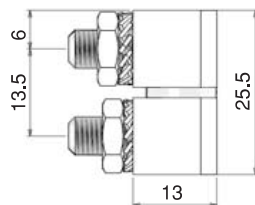


## SIDE HINGE (10 mm)

191



LH/RH



- Side mounted hinge
- 12 mm parts are steel.

## APPLICATIONS


Electric panels, machinery covers.

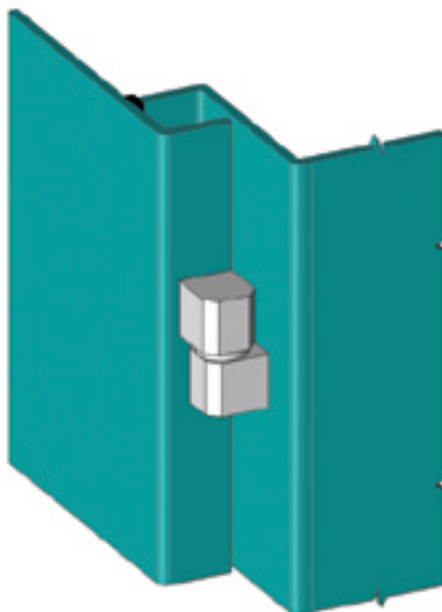
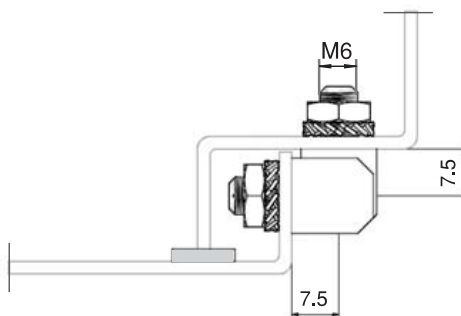
## MATERIAL

Steel

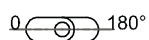
## FINISH

Zinc plated

 **Note:** Nuts and washers are given



## Hinge Rotation Angle



## PRODUCT CODE

191

6

- 3

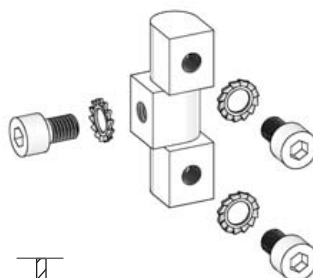
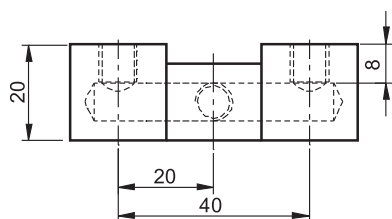
GROUP CODE

MATERIAL

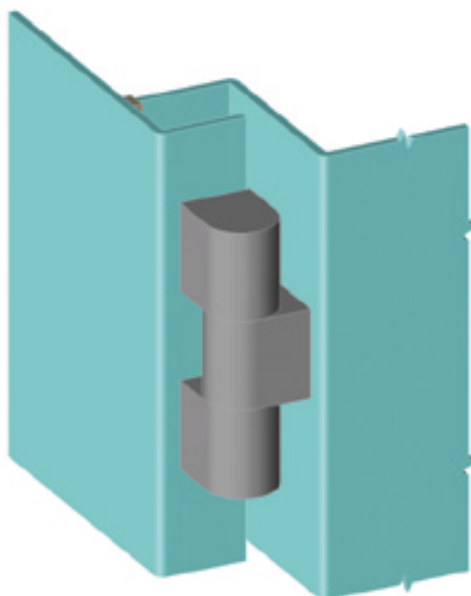
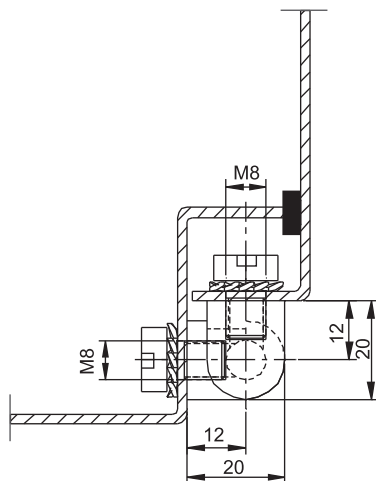
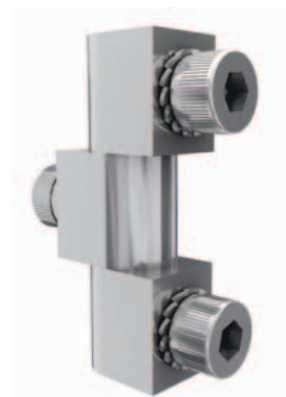
FINISH

293

SIDE HINGE



LH/RH



- For medium voltage and heavy door panels. Chrome plated brass. Parts supplied separately.
- Assembled using special screws (supplied). Hinge has high resistance.

#### APPLICATIONS

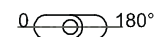
Electric panels, machinery covers.

#### MATERIAL

BRASS : DIN 17672 CuZn39Pb3

**Note:** Bolts and washers are given

Hinge Rotation Angle



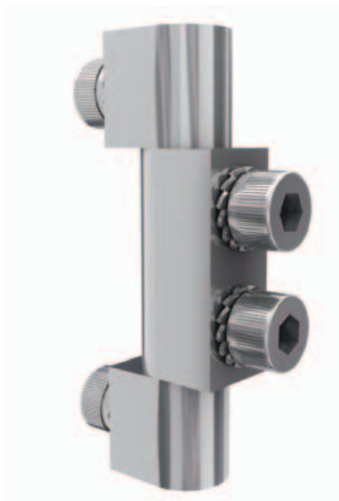
#### PRODUCT CODE

|            |          |   |        |
|------------|----------|---|--------|
| 293        | 3        | - | 1      |
| GROUP CODE | MATERIAL |   | FINISH |

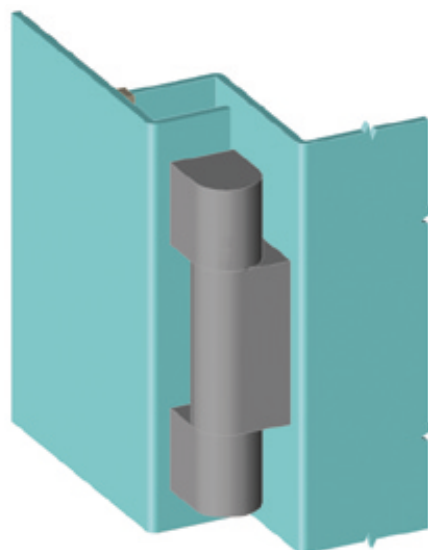
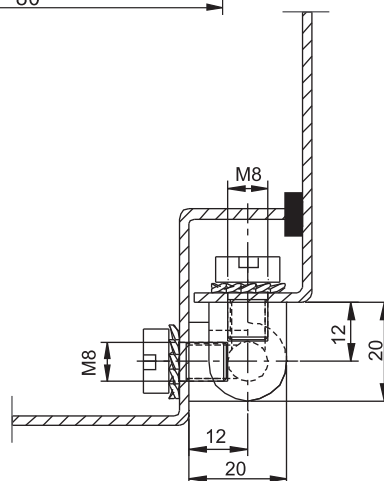
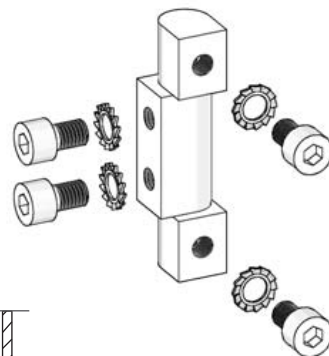
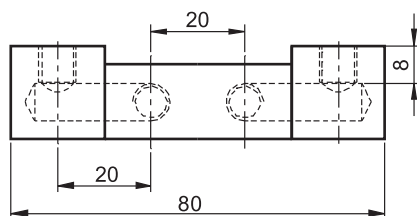
| MATERIAL | M | FINISH | F |
|----------|---|--------|---|
| Brass    | 3 | Chrome | 1 |

## SIDE HINGE

393



LH/RH




- For medium voltage and heavy door panels. Chrome plated brass. Parts supplied separately.
- Assembled using special screws (supplied). Hinge has high resistance.

## APPLICATIONS

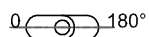
Electric panels, machinery covers.

## MATERIAL

BRASS : DIN 17672 CuZn39Pb3

 **Note:** Bolts and washers are given

## Hinge Rotation Angle



## PRODUCT CODE

393

3

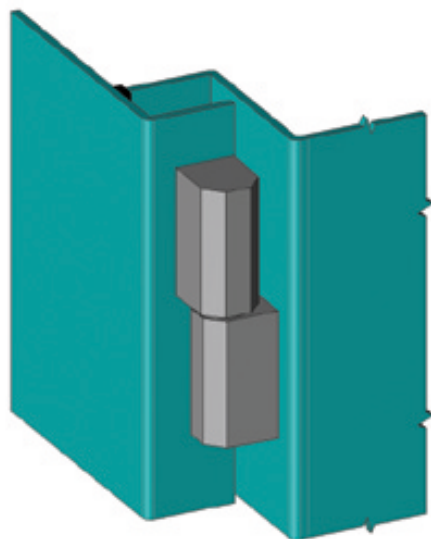
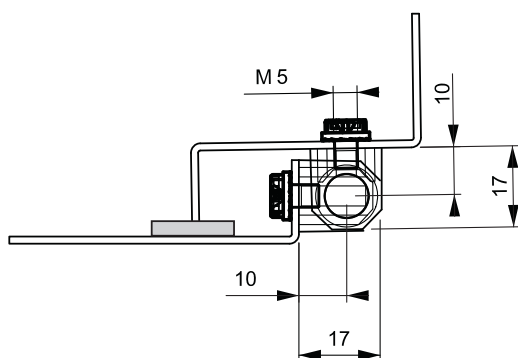
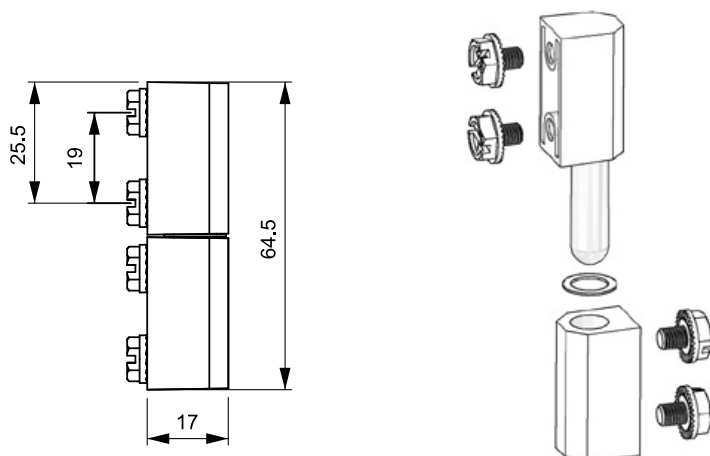
1

GROUP CODE

MATERIAL

FINISH

| MATERIAL | M | FINISH | F |
|----------|---|--------|---|
| Brass    | 3 | Chrome | 1 |



493

SIDE HINGE



LH/RH



- Lift off hinge.
- For left or right hand opening doors. Maximum hinge rotation 180°.

#### APPLICATIONS

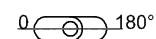
Electric panels, machinery covers.

#### MATERIAL

Zamak DIN-EN 1774-ZnAl4Cu1

**Note:** Bolts are given

Hinge Rotation Angle



#### PRODUCT CODE

|            |          |   |        |
|------------|----------|---|--------|
| 493        | 1        | - | F      |
| GROUP CODE | MATERIAL |   | FINISH |

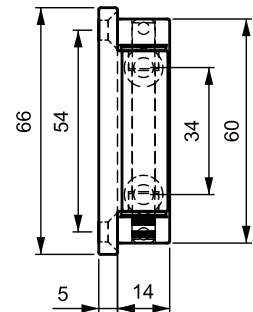
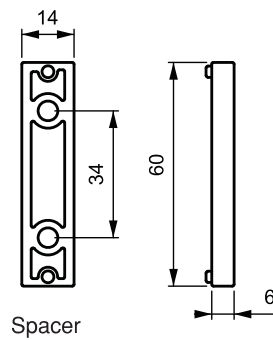
| MATERIAL | M | FINISH       | F |
|----------|---|--------------|---|
| Zamak    | 1 | Chrome       | 1 |
|          |   | Black coated | 2 |

## SIDE HINGE

593

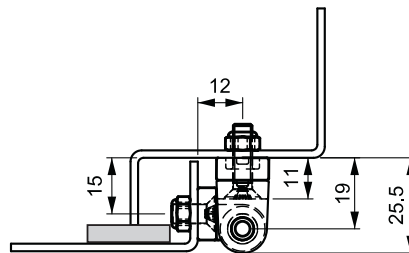


LH/RH



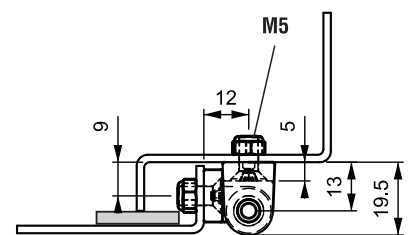
## Spacer version

593 1-F-25



## Standard version

593 1-F-19



- Spacer bar available for different dimensions.
- Stainless steel hinge pin.

## APPLICATIONS

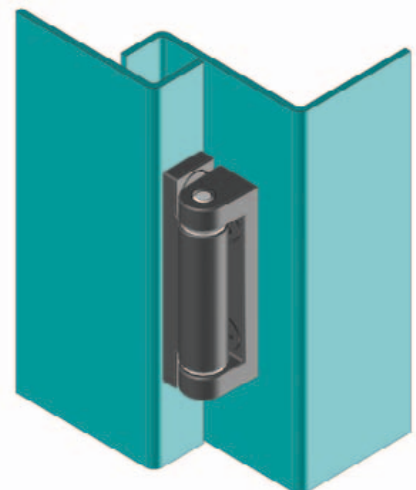
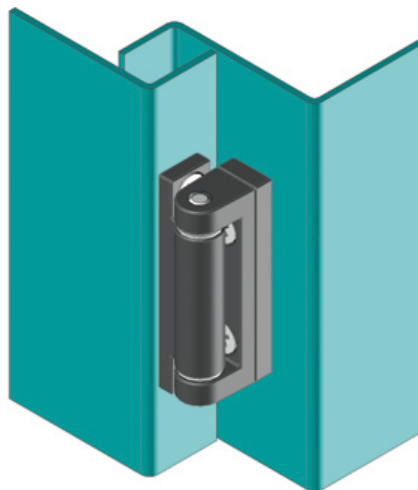
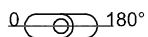
Electric panels, machinery covers.

## MATERIAL

Zamak DIN-EN 1774-ZnAl4Cu1

**Note:** Bolts are not given

## Hinge Rotation Angle



## PRODUCT CODE

|            |   |          |   |        |   |        |
|------------|---|----------|---|--------|---|--------|
| 593        | - | 1        | - | F      | - | H      |
| GROUP CODE |   | MATERIAL |   | FINISH |   | HEIGHT |

| MATERIAL | M | FINISH       | F |
|----------|---|--------------|---|
| Zamak    | 1 | Chrome       | 1 |
|          |   | Black coated | 2 |

**693**

**SIDE HINGE**



**LH/RH**



- Side mounted hinge.
- Stainless steel hinge pin. Supplied already assembled.

**APPLICATIONS**

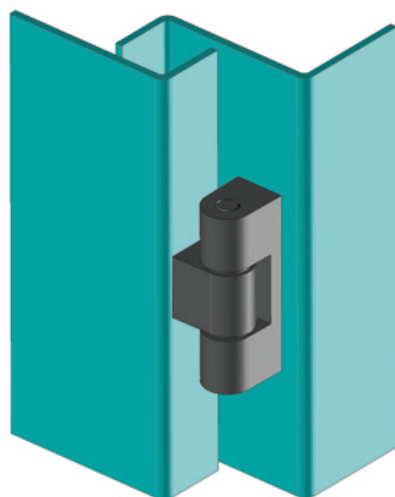
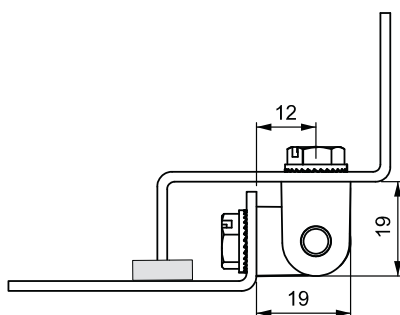
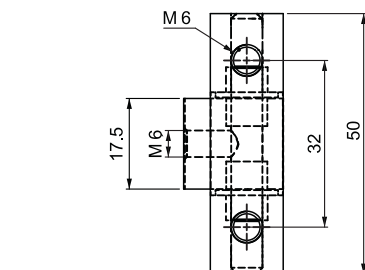
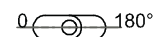
Electric panels, machinery covers.

**MATERIAL**

Zamak DIN-EN 1774-ZnAl4Cu1

**⚠ Note:** Bolts are not given

**Hinge Rotation Angle**



**PRODUCT CODE**

**693** - **1** - **F**

GROUP CODE MATERIAL FINISH

| MATERIAL | M | FINISH       | F |
|----------|---|--------------|---|
| Zamak    | 1 | Chrome       | 1 |
|          |   | Black coated | 2 |



# Concealed Hinges

| Group code | Product name    |
|------------|-----------------|
| 094        | Concealed hinge |
| 194        | Concealed hinge |
| 096        | Concealed hinge |
| 196        | Concealed hinge |
| 095        | Concealed hinge |
| 195        | Concealed hinge |
| 895        | Concealed hinge |
| 995        | Concealed hinge |
| 295        | Concealed hinge |
| 395        | Concealed hinge |
| 695        | Concealed hinge |
| 795        | Concealed hinge |
| 289        | Concealed hinge |
| 189        | Spring loaded   |
| 294        | Concealed hinge |
|            |                 |



Page

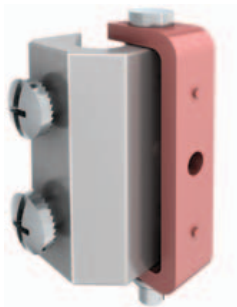
|           |
|-----------|
| 180       |
| 181       |
| 182       |
| 183       |
| 184 - 185 |
| 186 - 187 |
| 188       |
| 189       |
| 190 - 191 |
| 192 - 193 |
| 194 - 195 |
| 196       |
| 197       |
| 198       |
| 199       |



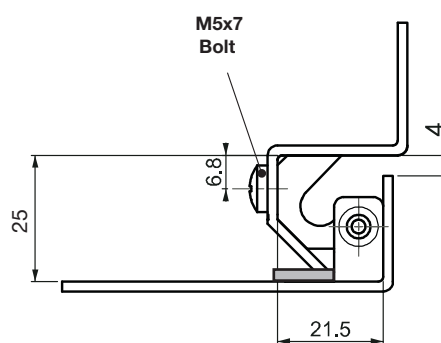
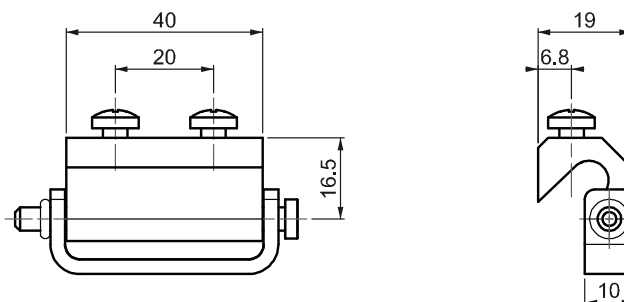


## CONCEALED HINGE

094



LH/RH



- For 25 mm bended doors . Middle part is copper plated for easy welding

## APPLICATIONS

Electric panels, machinery covers.

## MATERIAL

BODY : Zamak DIN-EN 1774-ZnAl4Cu1  
or Aluminium

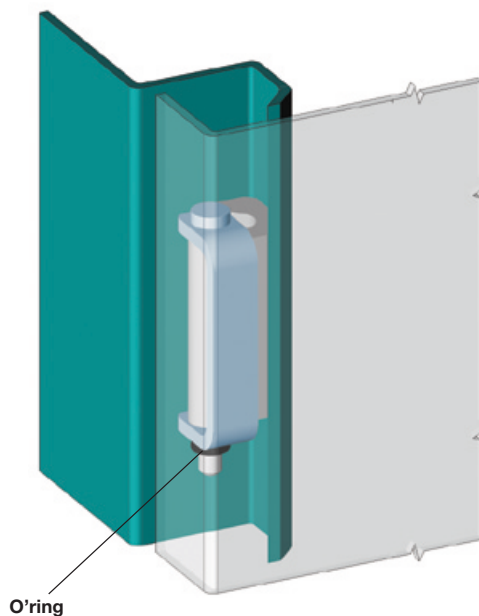
Fixed part: : Steel

## FINISH

BODY : Zinc plated

FIXED PART : Copper plated

⚠ **Note:** Bolts are given



## Hinge Rotation Angle



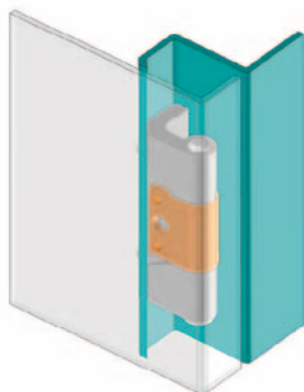
## PRODUCT CODE

|            |          |   |        |
|------------|----------|---|--------|
| 094        | M        | - | F      |
| GROUP CODE | MATERIAL |   | FINISH |

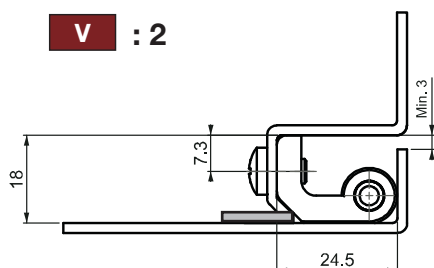
| MATERIAL  | M | FINISH        | F |
|-----------|---|---------------|---|
| Zamak     | 1 | Chrome        | 1 |
| Aluminium | 5 | Matt anodized | 7 |

**194**

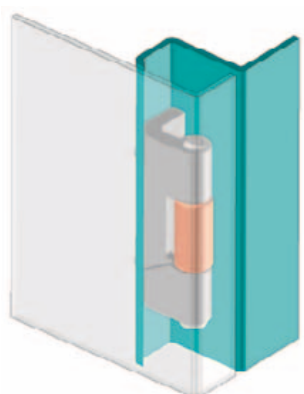
**CONCEALED HINGE**



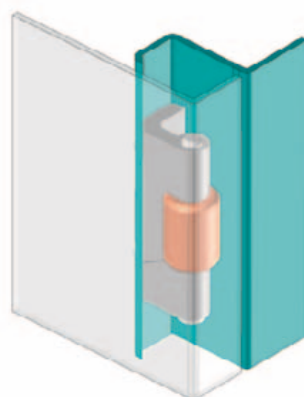
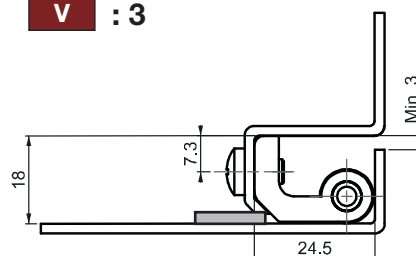
**V : 2**



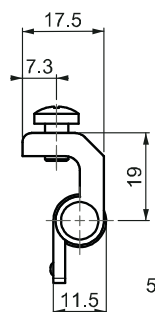
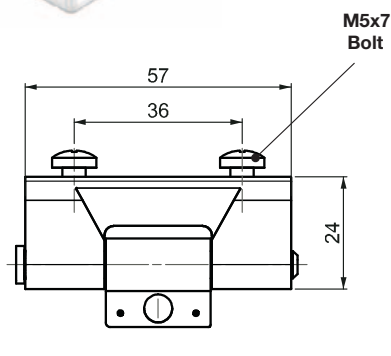
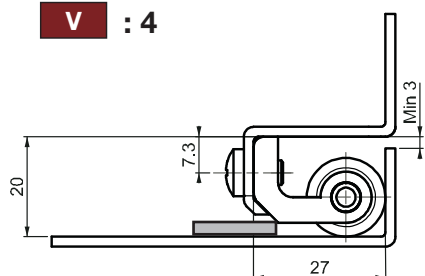
**LH/RH**



**V : 3**



**V : 4**



- For doors with a bend of between 18 mm and 27 mm. Centre part is copper plated for easy welding.
- The centre part is available in different versions.

**APPLICATIONS**

Electric panels, machinery covers.

**MATERIAL**

BODY : Zamak DIN-EN 1774-ZnAl4Cu1

WELDING PART : Steel

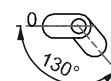
**FINISH**

BODY : Zinc Plated

WELDING PART : Copper plated

**⚠ Note:** Bolts are given

**Hinge Rotation Angle**



**PRODUCT CODE**

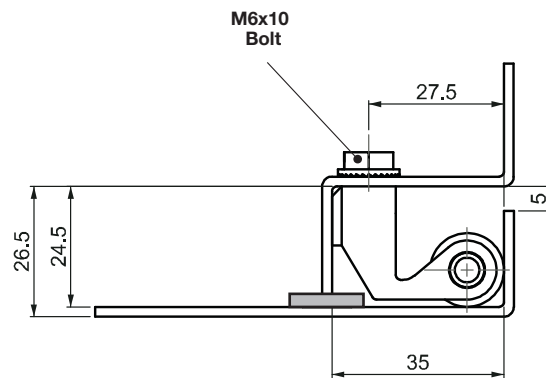
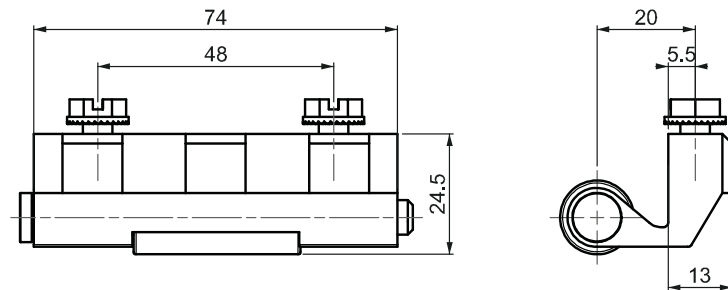
**194** - **V**  
GROUP CODE VERSION

## CONCEALED HINGE

096



LH/RH



- For doors with a 24.5 mm bend. Suitable for both panel and door profile fixing.

**APPLICATIONS**

Electric panels, machinery covers.

**MATERIAL**

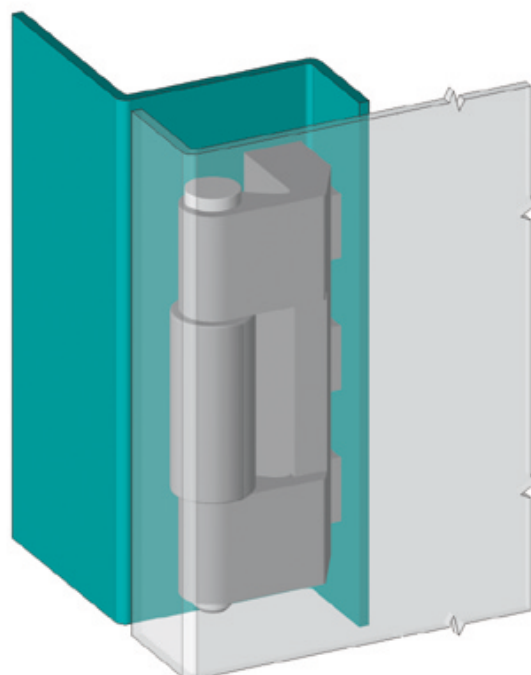
BODY: Zamak DIN-EN 1774-ZnAl4Cu1

WELDING PART : Steel

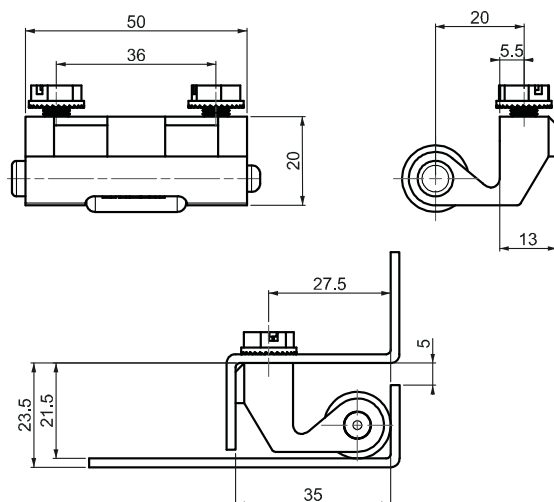
**FINISH**

BODY : Zinc Plated

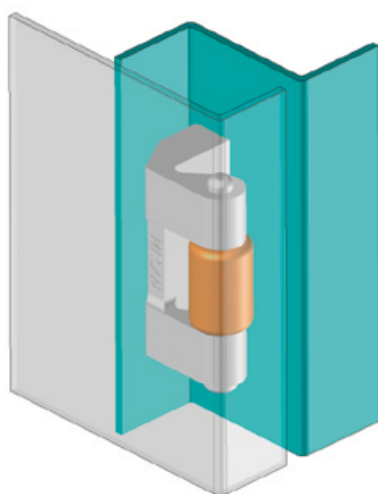
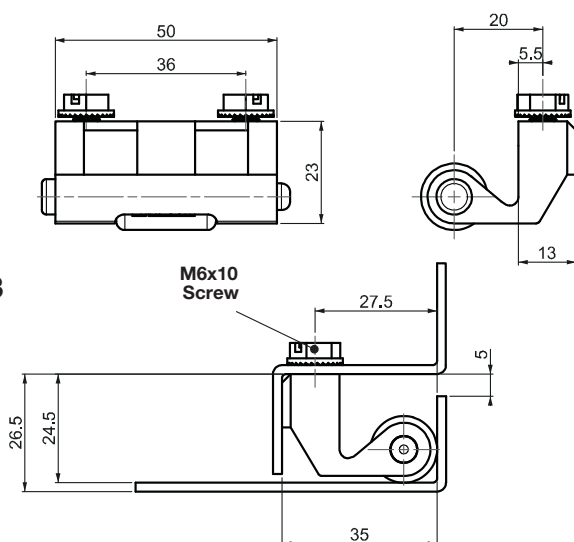
WELDING PART : Copper plated

**Note:** Bolts are given**Hinge Rotation Angle**

**V : 20**



**V : 23**



**PRODUCT CODE**

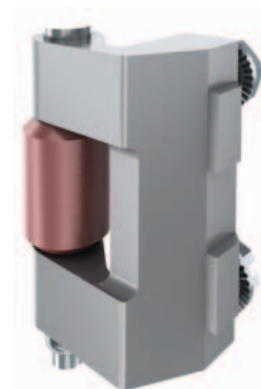
**196** - **V**  
GROUP CODE VERSION

**196**

**CONCEALED HINGE**



**LH/RH**



- For 21.5 mm to 24.5 mm bended doors. Two different dimensions are available.
- It is alternative for 096 hinge and more competitive.

**APPLICATIONS**

Electric panels, machinery covers.

**MATERIAL**

BODY: Zamak DIN-EN 1774-ZnAl4Cu1

WELDING PART : Steel

**FINISH**

BODY : Zinc Plated

WELDING PART : Copper plated

**⚠ Note:** Bolts are given

**Hinge Rotation Angle**



## CONCEALED HINGE

095



LH/RH

- For doors with a bend of 22.5 mm or more. Available drilled with two holes or with two mounting studs.
- The centre part is available in different versions.

## APPLICATIONS

Electric panels, machinery covers.

## MATERIAL

Steel

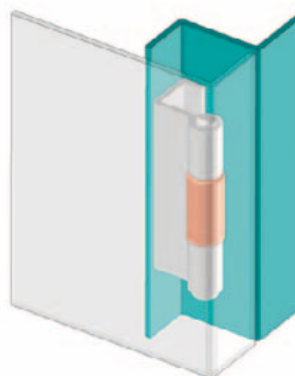
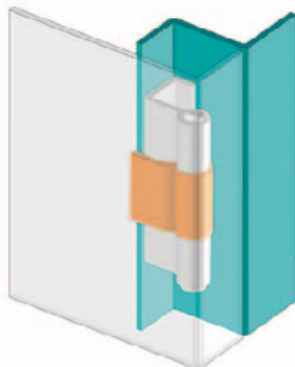
## FINISH

BODY: Zinc Plated

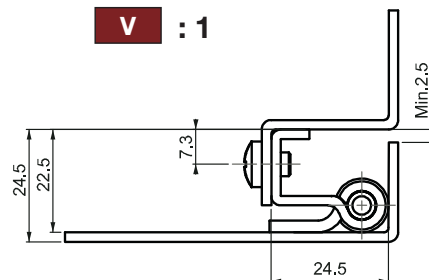
WELDING PART : Copper plated

**Note:** Bolts are given

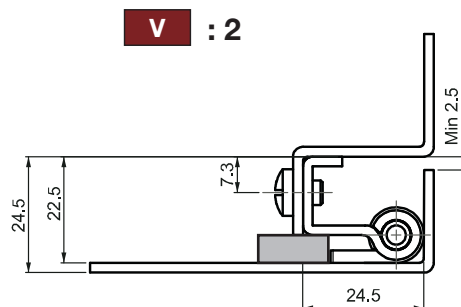
## Hinge Rotation Angle



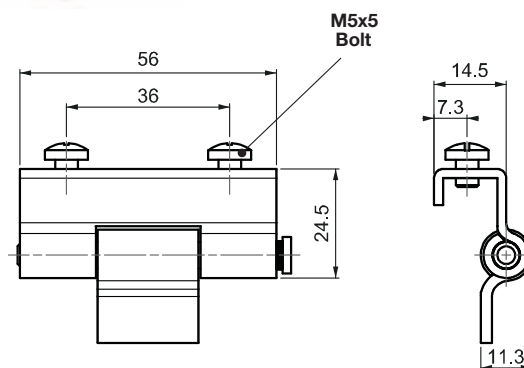
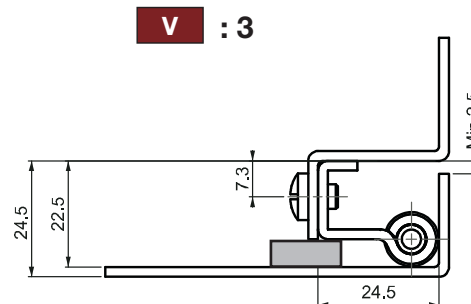
V : 1



V : 2



V : 3

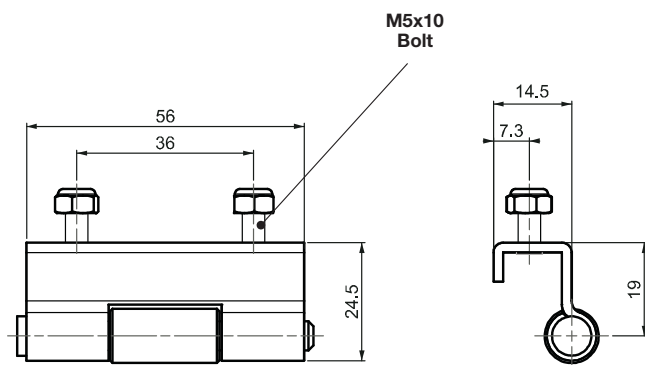


## PRODUCT CODE

|            |          |   |        |   |         |   |      |
|------------|----------|---|--------|---|---------|---|------|
| 095        | 6        | - | 3      | - | V       | - | 0    |
| GROUP CODE | MATERIAL |   | FINISH |   | VERSION |   | Hole |

**095**

**CONCEALED HINGE**



**LH/RH**



- For doors with a bend of 22.5 mm or more. Available drilled with two holes or with two mounting studs.
- The centre part is available in different versions.

**APPLICATIONS**

Electric panels, machinery covers.

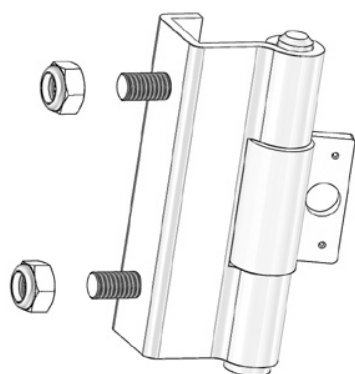
**MATERIAL**

Steel

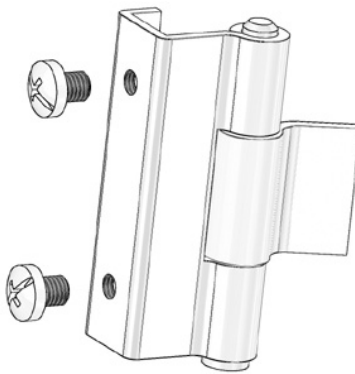
**FINISH**

BODY: Zinc Plated

WELDING PART : Copper plated



Stud



With Holes

**Hinge Rotation Angle**



**PRODUCT CODE**

|            |          |   |          |   |          |   |          |
|------------|----------|---|----------|---|----------|---|----------|
| <b>095</b> | <b>6</b> | - | <b>3</b> | - | <b>V</b> | - | <b>1</b> |
| GROUP CODE | MATERIAL |   | FINISH   |   | VERSION  |   | Stud     |

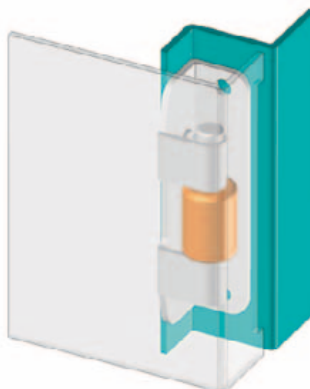
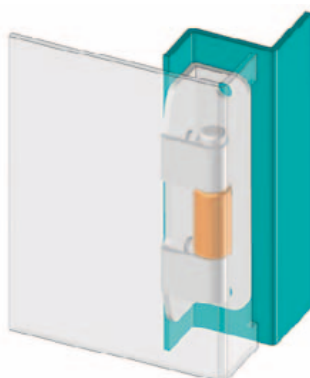
## CONCEALED HINGE

195

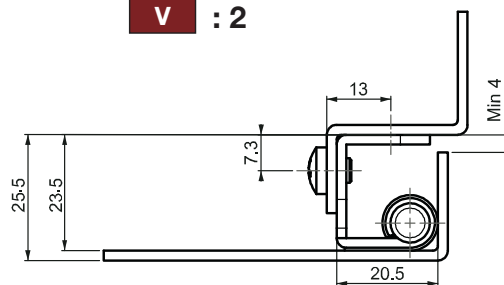
Fixed : 1



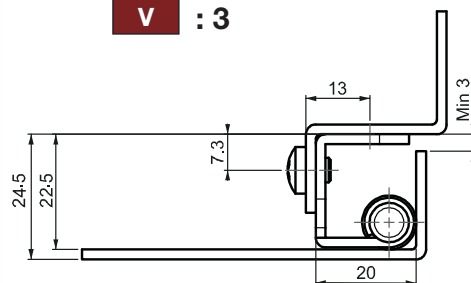
LH/RH



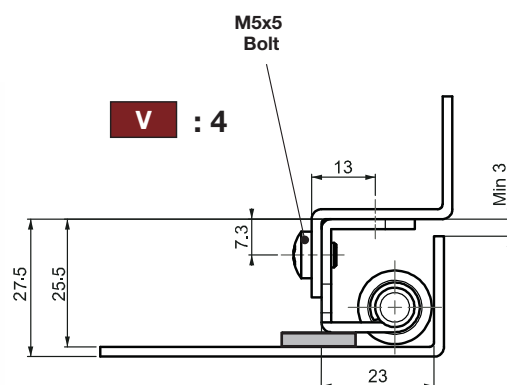
V : 2



V : 3



V : 4



- For doors with a bend of between 23.5mm and 25.5mm.
- Easily fixed to panel or door profile due to hinge design.

## APPLICATIONS

Electric panels, machinery covers.

## MATERIAL

Steel

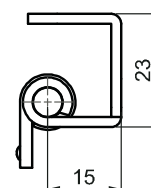
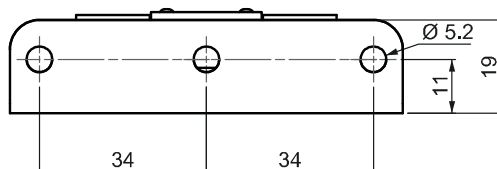
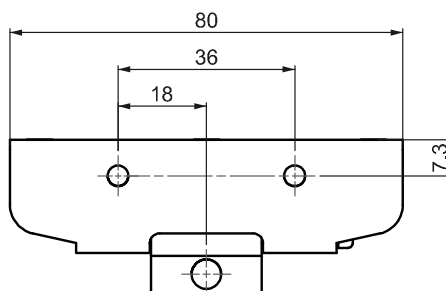
## FINISH

BODY: Zinc Plated

WELDING PART : Copper plated

⚠ **Note:** Bolts are given

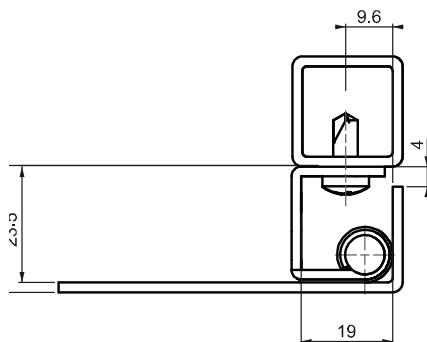
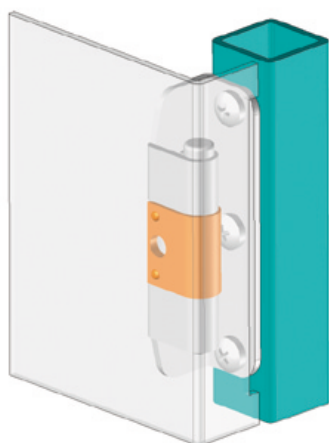
## Hinge Rotation Angle



Fixed: 2

195

CONCEALED HINGE



LH/RH



- For doors with a bend of between 23.5mm and 25.5mm.
- Easily fixed to panel or door profile due to hinge design.

#### APPLICATIONS

Electric panels, machinery covers.

#### MATERIAL

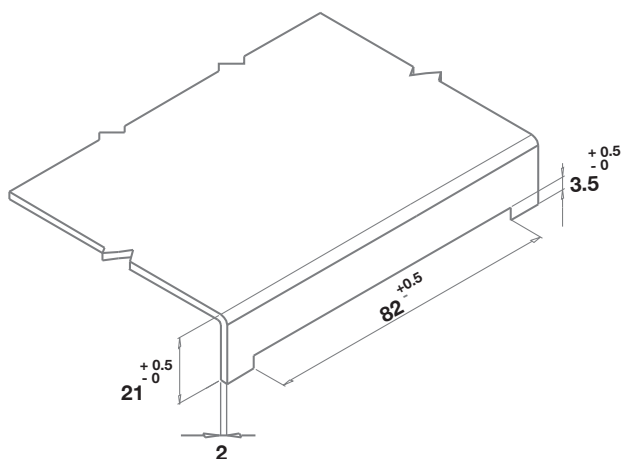
Steel

#### FINISH

BODY: Zinc Plated

WELDING PART : Copper plated

**⚠ Note:** Bolts are given



Hinge Rotation Angle



#### PRODUCT CODE

195 - V  
GROUP CODE VERSION



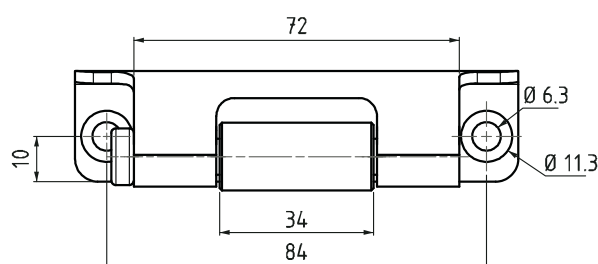
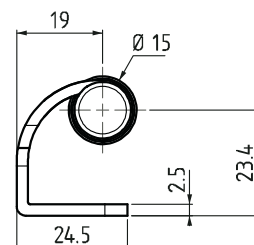
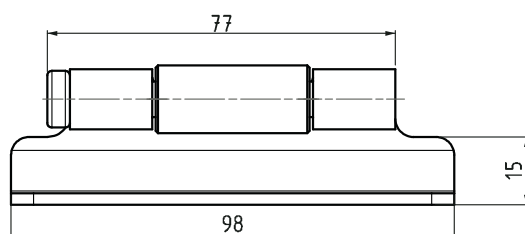
## CONCEALED HINGE

895

New



LH/RH



- Side part can be mounted with M 5 screws.
- Centre part is copper plated for easy welding.
- Suitable for heavy duty applications.
- Pin should be mounted during the assembly of the hinge.

## APPLICATIONS

Electric panels, machinery covers.

## MATERIAL

Steel

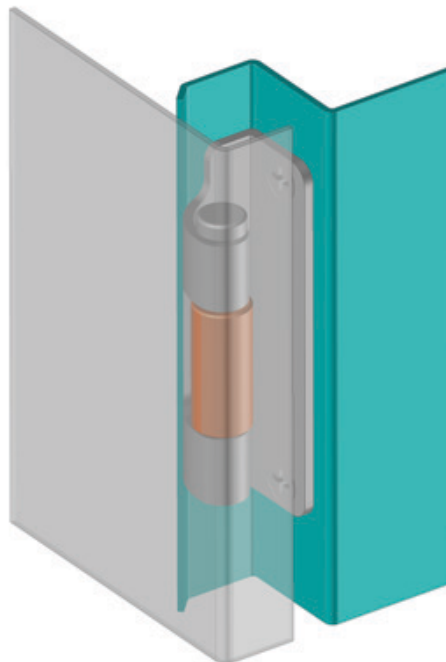
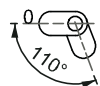
## FINISH

BODY: Zinc Plated

WELDING PART : Copper plated

⚠ **Note:** Bolts are not given

## Hinge Rotation Angle



## PRODUCT CODE

895

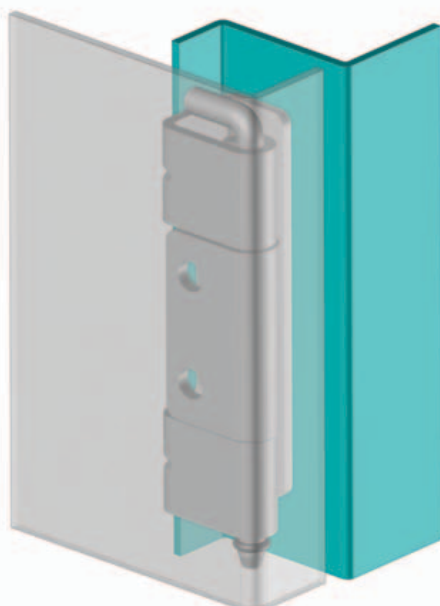
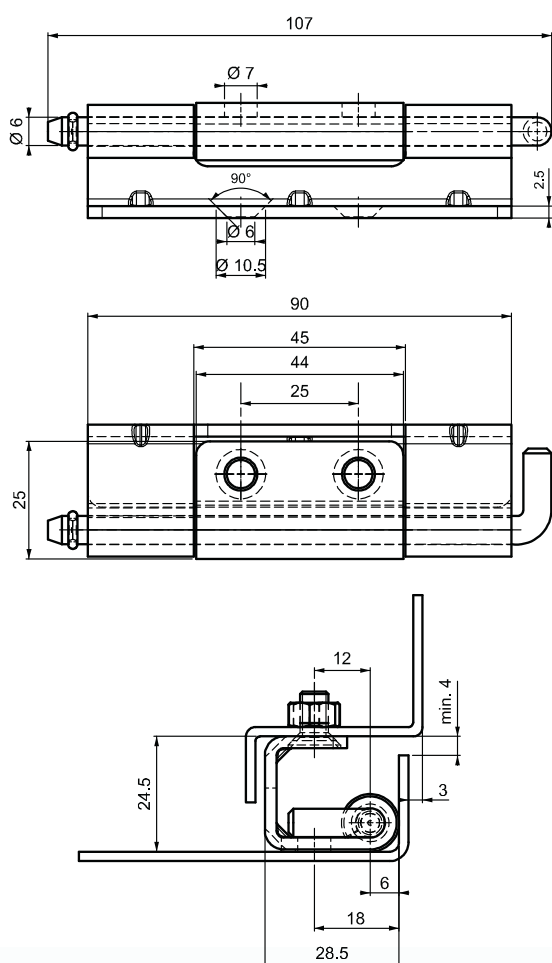
6

3

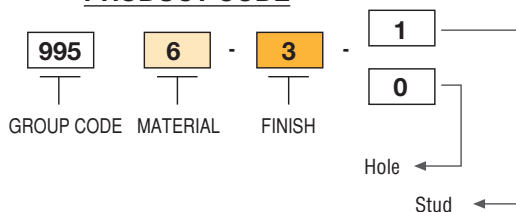
GROUP CODE

MATERIAL

FINISH



**PRODUCT CODE**



**995**

**CONCEALED HINGE**

*New*



*LH/RH*



- Side part can be mounted with M 5 screws.
- Centre part is copper plated for easy welding.
- Suitable for heavy duty applications.
- Left and right versions are possible.
- Suitable for 25 mm door bend cabinets.

**APPLICATIONS**

Electric panels, machinery covers.

**MATERIAL**

Steel

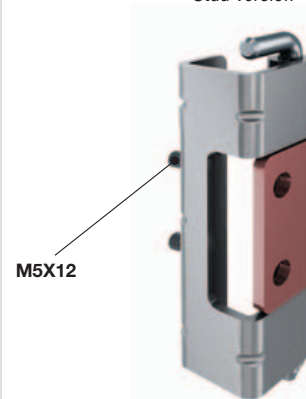
**FINISH**

BODY: Zinc Plated

WELDING PART : Copper plated

**! Note:** Bolts are not given

Stud version



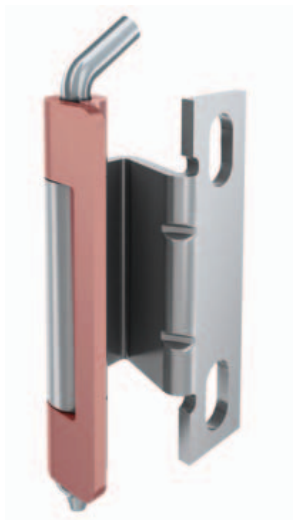
**! Note:** Nuts are not given

**Hinge Rotation Angle**



## CONCEALED HINGE

295



LH/RH

- For doors with a bend of between 20 mm and 24mm.
- Frame part is screwed -on , door part is welded-on
- LH and RH application is possible

## APPLICATIONS

Electric panels, machinery covers.

## MATERIAL

Steel

## FINISH

BODY: Zinc Plated

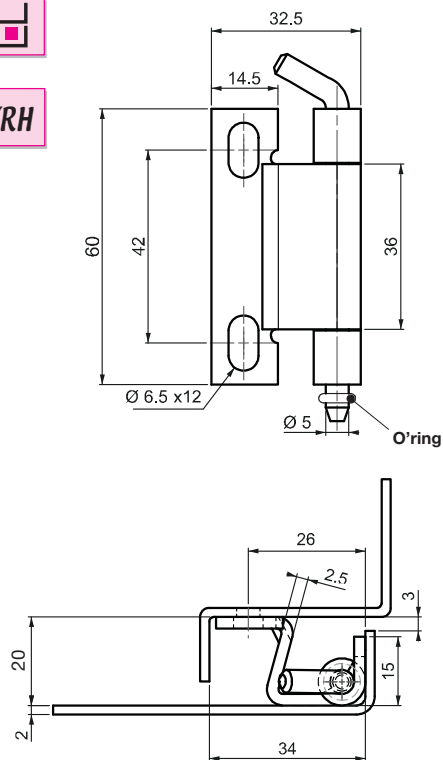
WELDING PART : Copper plated

**⚠ Note:** Bolts are not given

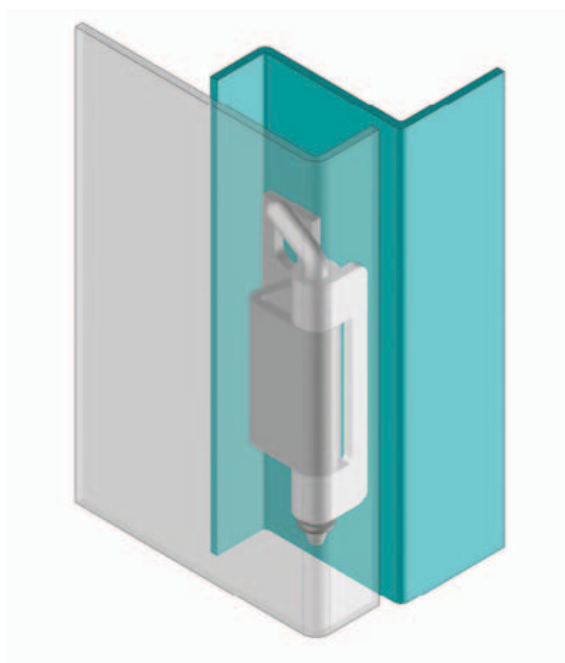
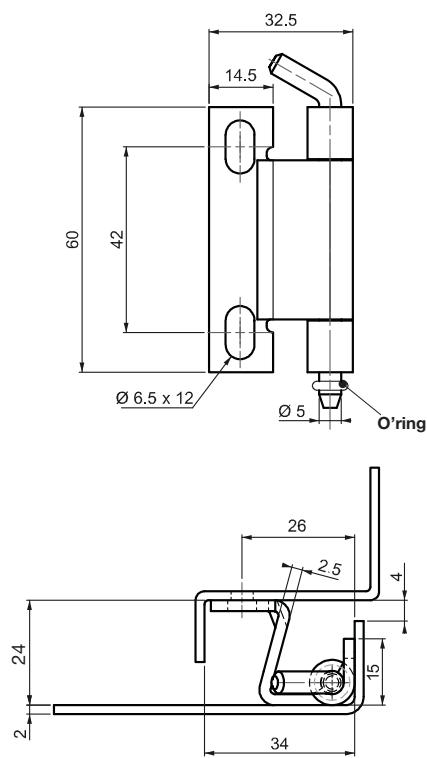
## Hinge Rotation Angle



V : 1



V : 2



## PRODUCT CODE

295

6

3

V

GROUP CODE

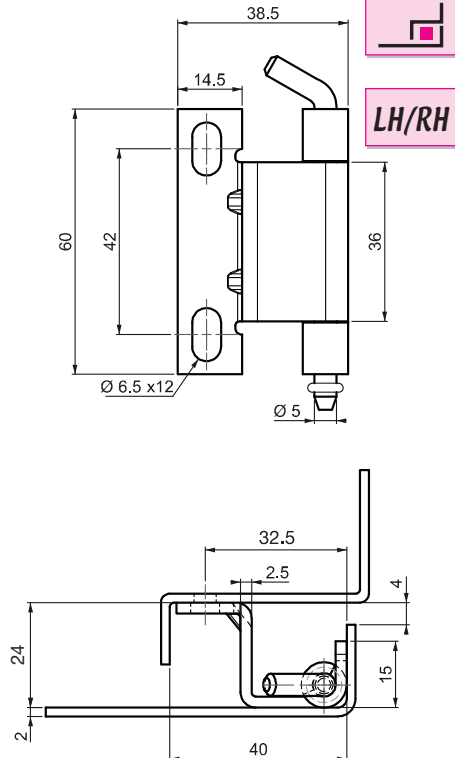
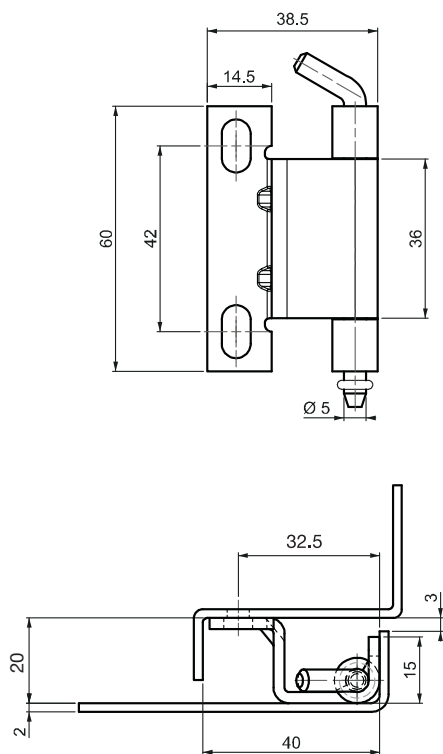
MATERIAL

FINISH

VERSION

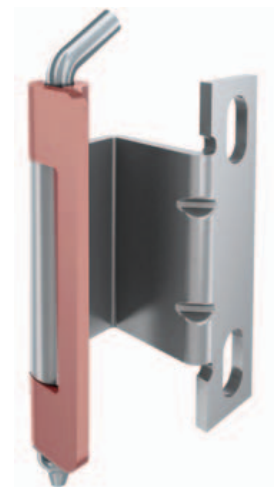
**V : 3**

**V : 4**



**295**

**CONCEALED HINGE**



**APPLICATIONS**

Electric panels, machinery covers.

**MATERIAL**

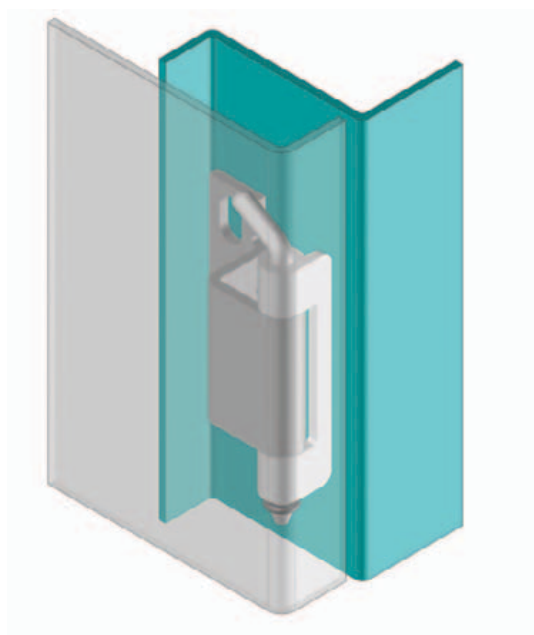
Steel

**FINISH**

BODY : Zinc Plated

WELDING PART : Copper plated

**⚠ Note:** Bolts are not given



**Hinge Rotation Angle**



**PRODUCT CODE**

|            |          |   |          |   |          |
|------------|----------|---|----------|---|----------|
| <b>295</b> | <b>6</b> | - | <b>3</b> | - | <b>V</b> |
| GROUP CODE | MATERIAL |   | FINISH   |   | VERSION  |

## CONCEALED HINGE

395



LH/RH

- For doors with a bend of between 20 mm and 24mm.
- Frame part is screwed -on , door part is welded-on
- LH and RH application is possible

## APPLICATIONS

Electric panels, machinery covers.

## MATERIAL

Steel

## FINISH

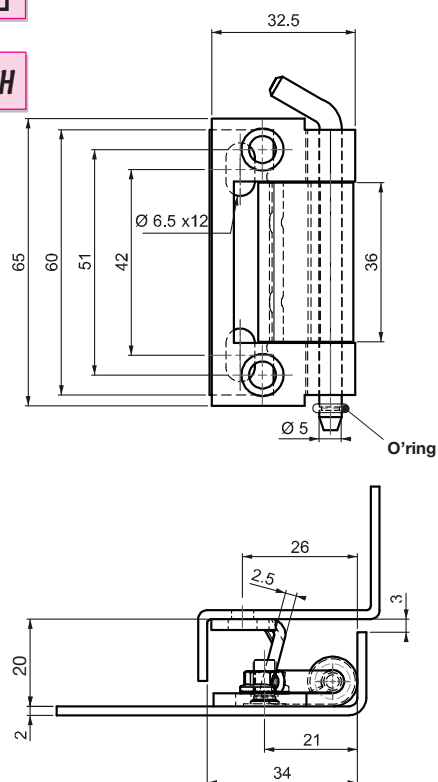
Zinc Plated

⚠ **Note:** Bolts are not given

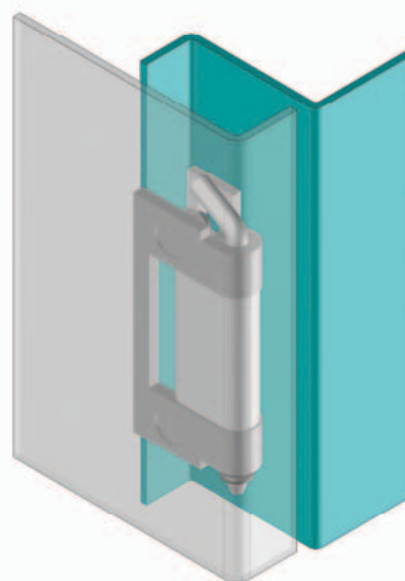
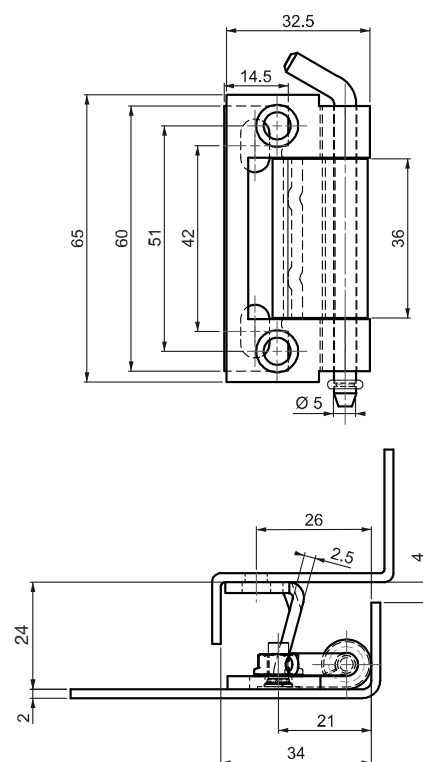
## Hinge Rotation Angle



V : 1



V : 2



## PRODUCT CODE

395

6

3

V

GROUP CODE

MATERIAL

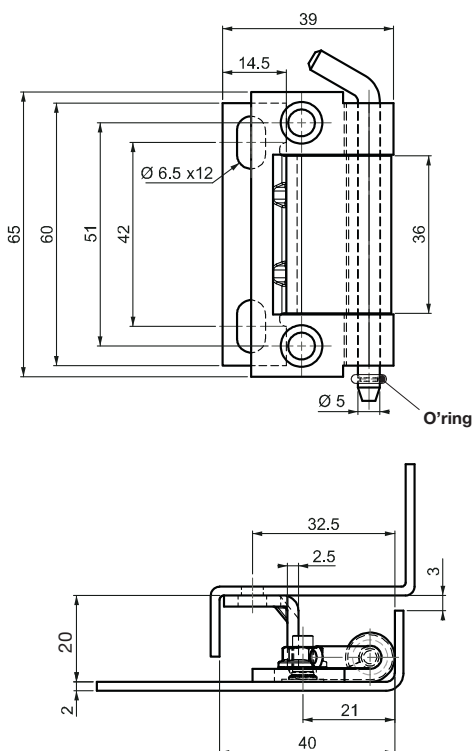
FINISH

VERSION

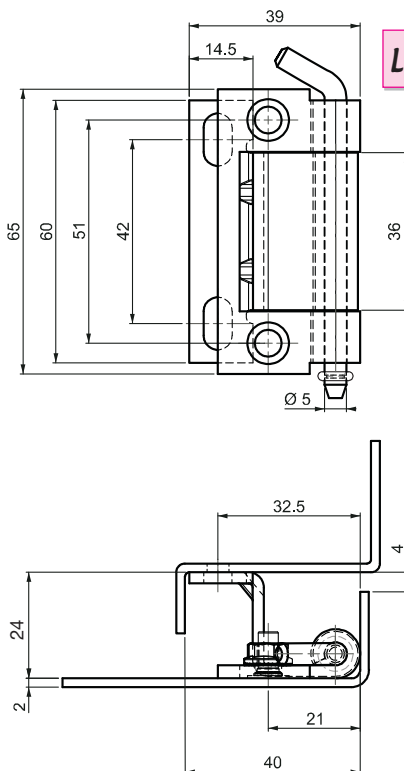
**395**

**CONCEALED HINGE**

**V : 3**



**V : 4**



**LH/RH**



**APPLICATIONS**

Electric panels, machinery covers.

**MATERIAL**

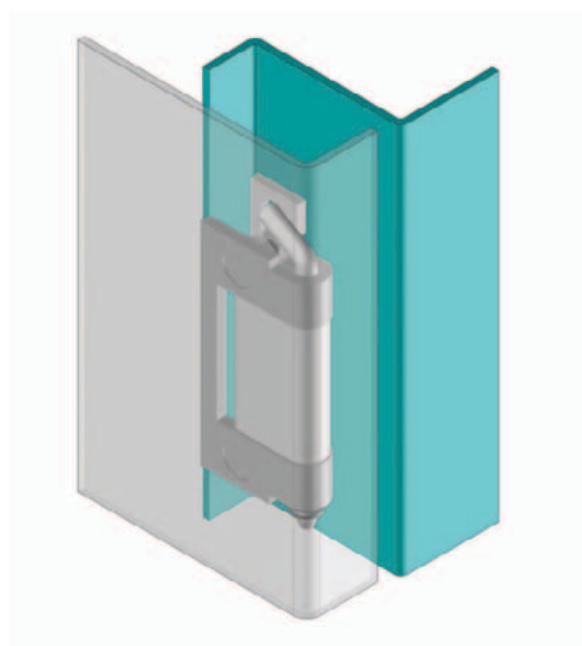
Steel

**FINISH**

Zinc Plated



**Note:** Bolts are not given



**Hinge Rotation Angle**



**PRODUCT CODE**

**395**

**6**

**3**

**V**

GROUP CODE

MATERIAL

FINISH

VERSION

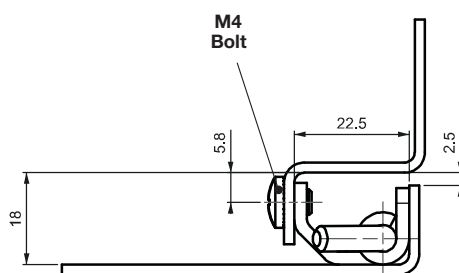
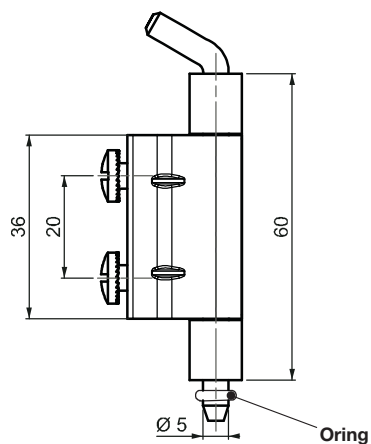
## CONCEALED HINGE

695

V : 1



LH/RH



- For doors with a bend of 18 mm
- Frame part is screwed -on , door part is either welded-on or screwed-on
- LH and RH application is possible

**APPLICATIONS**

Electric panels, machinery covers.

**MATERIAL**

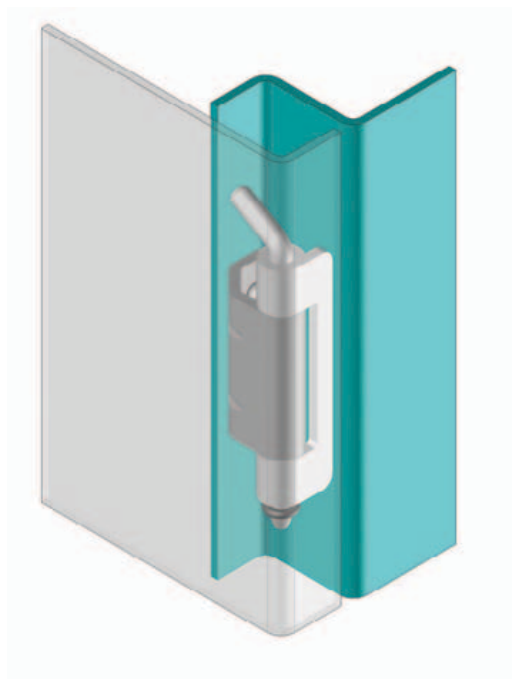
Steel

**FINISH**

BODY : Zinc Plated

WELDING PART : Copper plated

⚠ **Note:** Bolts are given

**Hinge Rotation Angle****PRODUCT CODE**

695

6

3

1

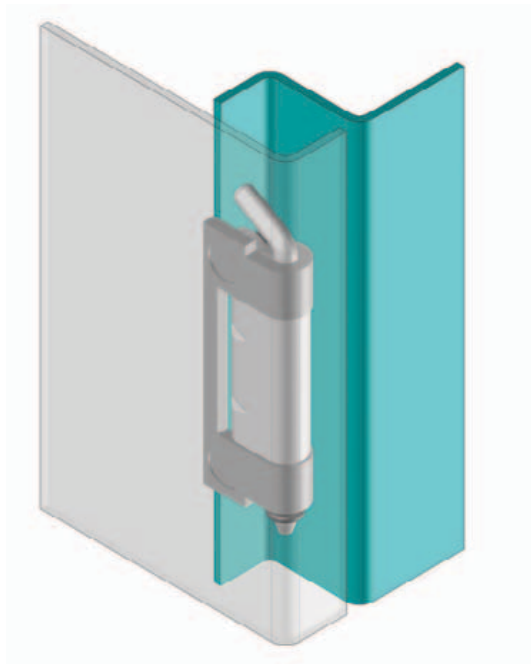
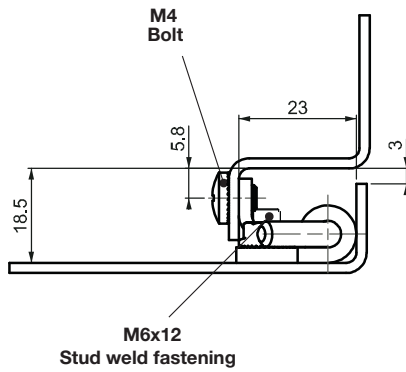
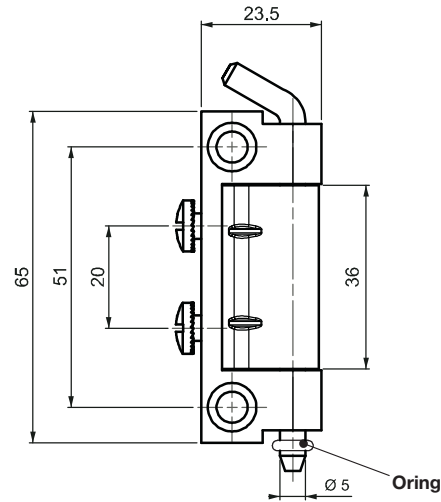
GROUP CODE

MATERIAL

FINISH

VERSION

**V : 2**



**695**

**CONCEALED HINGE**



**LH/RH**



- For doors with a bend of 18.5 mm
- Frame part is screwed -on ,door part is mounted by nut to welded stud on door.
- LH and RH application is possible

**APPLICATIONS**

Electric panels, machinery covers.

**MATERIAL**

Steel

**FINISH**

Zinc Plated

**⚠ Note:** Bolts are given

**Hinge Rotation Angle**



**PRODUCT CODE**

|            |          |   |          |   |          |
|------------|----------|---|----------|---|----------|
| <b>695</b> | <b>6</b> | - | <b>3</b> | - | <b>2</b> |
| GROUP CODE | MATERIAL |   | FINISH   |   | VERSION  |

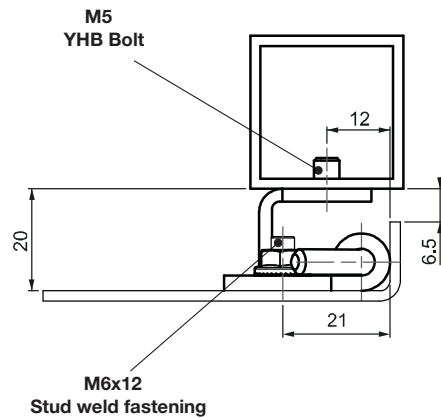
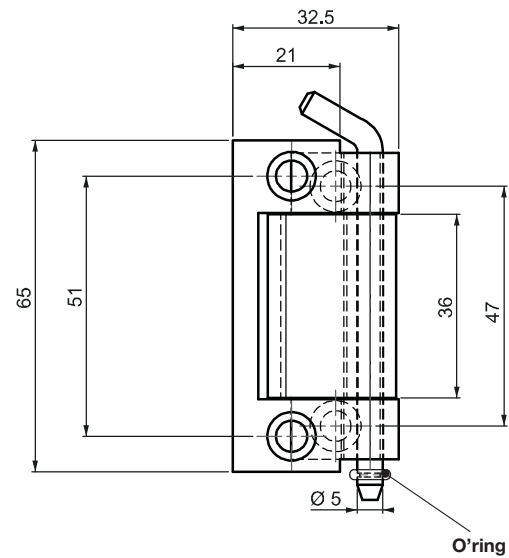


## CONCEALED HINGE

795



LH/RH



- For doors with a bend of 20 mm to fix profiles
- Frame part is screwed -on ,door part is mounted by nut to welded stud on door.
- LH and RH application is possible

## APPLICATIONS

Electric panels, machinery covers.

## MATERIAL

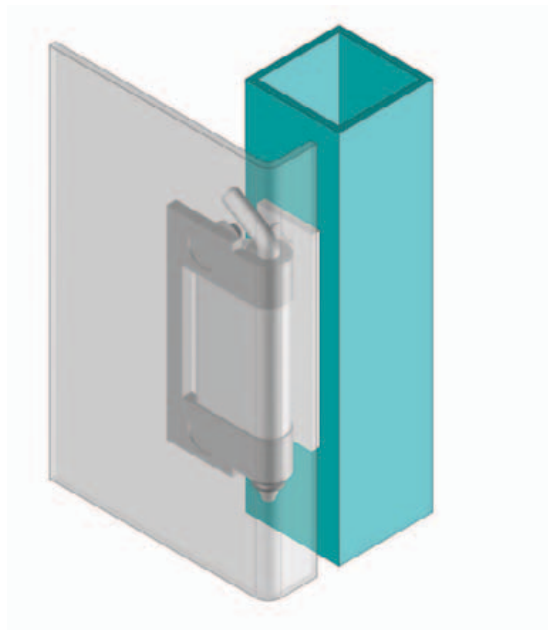
Steel

## FINISH

Zinc Plated

⚠ **Note:** Bolts are not given

## Hinge Rotation Angle



## PRODUCT CODE

795

6

-

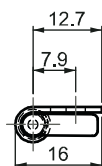
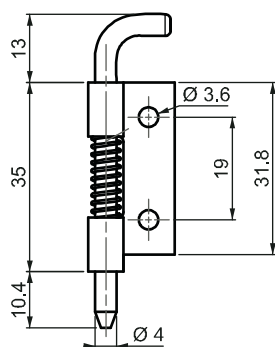
3

GROUP CODE

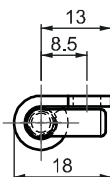
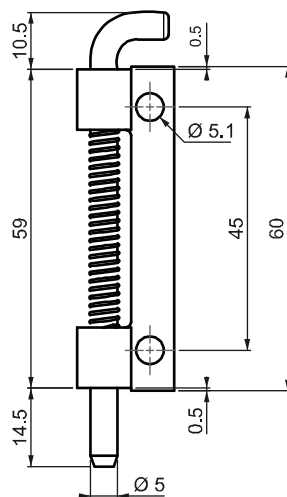
MATERIAL

FINISH

**V : 1**



**V : 2**



**289**

**CONCEALED HINGE**



**R H**

**L H**



- For internally mounted doors. Spring loaded hinge for easy door removal.
- Both versions are either screwed-on or welded-on
- LH and RH application is possible

**APPLICATIONS**

Electric panels, machinery covers.

**MATERIAL**

Steel

**FINISH**

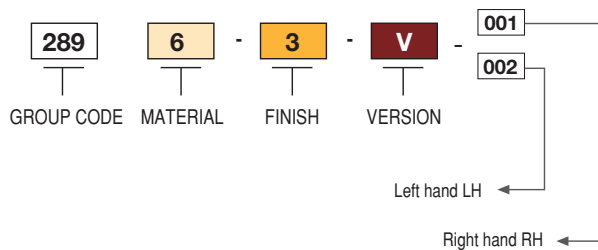
Zinc Plated

**! Note:** Bolts are not given

Assembled RH (as drawn)

Assembled LH (mirror inverted)

**PRODUCT CODE**

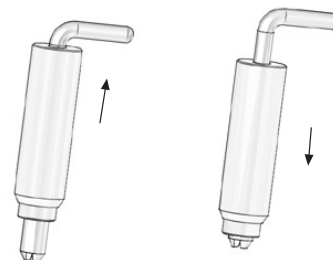
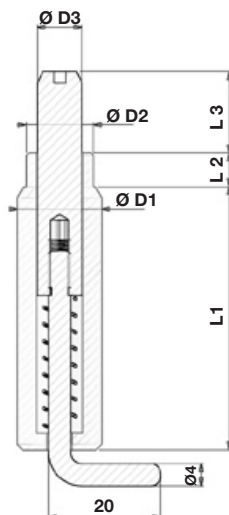


## SPRING LOADED

189



LH/RH



- For internally mounted doors. Spring loaded hinge for easy door removal.
- Body is copper plated for easy welding. Available as spring loaded, up and down pair or spring loaded up hinge and fixed bottom hinge.

## APPLICATIONS

Electric panels, machinery covers.

## MATERIAL

Steel

## FINISH

BODY: Copper plated

Other materials : Zinc plated

## Hinge Rotation Angle



## LOWER SEGMENT

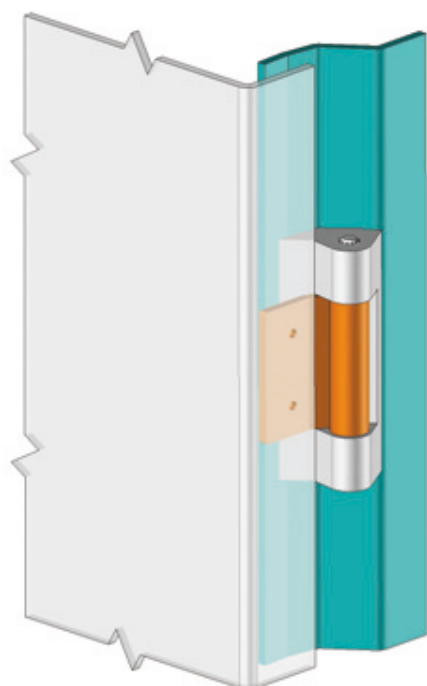
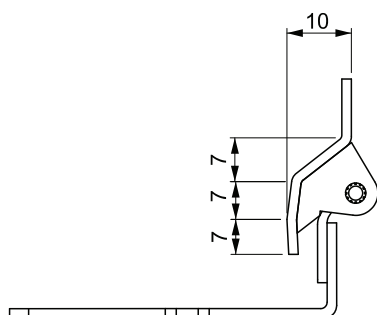
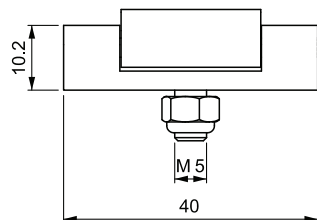
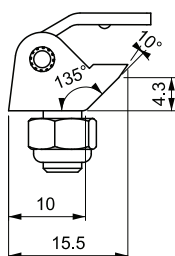
32003192



| Ø D1 | Ø D2 | Ø D3 | L 1<br>mm | L 2<br>mm | L 3<br>mm | PRODUCT CODE |
|------|------|------|-----------|-----------|-----------|--------------|
| 10   | 8.5  | 6    | 26.5      | 3.5       | 10        | 189-9        |
| 10   | 8.5  | 6    | 38        | 3.5       | 10        | 189-10       |
| 12   | 9    | 6    | 38        | 3.5       | 10        | 189-12       |
| 15   | 12   | 9    | 47        | 6         | 14.5      | 189-15       |

**294**

**CONCEALED HINGE**



**LH/RH**



- For small panels having a 10mm internal bend. Designed to maximize space available. copper plated for easy welding

#### APPLICATIONS

Electric panels, machinery covers.

#### MATERIAL

BODY : Zamak DIN-EN 1774-ZnAl4Cu1

WELDING PART : Steel

Pin : Steel

#### FINISH

BODY: Zinc Plated

WELDING PART : Copper plated

**! Note:** Bolts are nuts given

**Hinge Rotation Angle**







Page

|           |
|-----------|
| 202       |
| 203       |
| 204       |
| 205       |
| 206       |
| 207 - 208 |
| 209       |
| 210 - 211 |
| 212       |
| 213 - 215 |
| 216 - 217 |

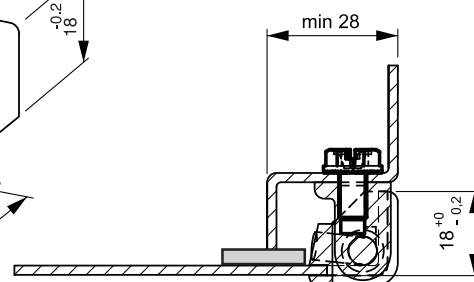
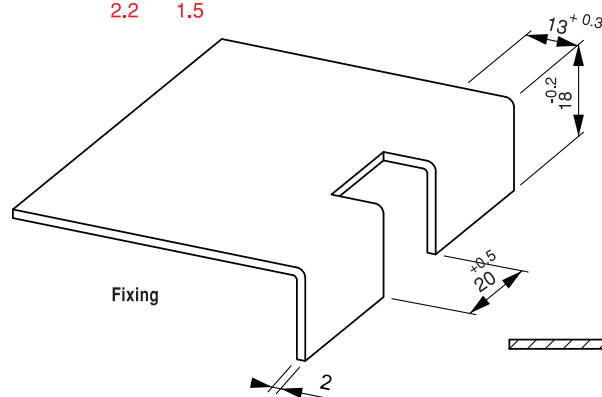
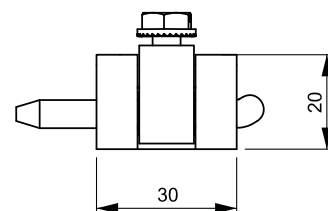
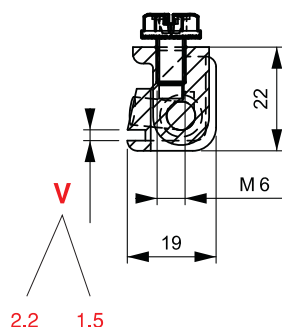


## CORNER HINGE

097



LH/RH



- Corner hinge.
- Suitable for steel panels with a thickness of between 1.0 mm and 2.2 mm.
- Hinge pin available in three types.

## APPLICATIONS

Small electric panels

## MATERIAL

FIXED, MOVABLE PARTS:

Zamak DIN-EN 1774-ZnAl4Cu1

PIN : Steel and Poliasetal (Delrin)

## FINISH

Chrome plated or black coated

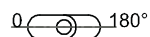
V : 15

For 1.0 mm - 1.2mm thickness panel  
(097 M-F-P-15)

V : 22

For 1.5 mm - 2 mm thickness panel  
(097 M-F-P-22)

## Hinge Rotation Angle

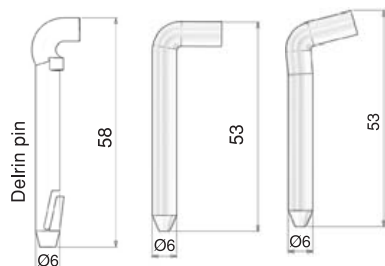


P = Pin

P= 1

P= 2

P= 3



## PRODUCT CODE

|            |          |        |     |         |
|------------|----------|--------|-----|---------|
| 097        | 1        | F      | P   | V       |
| GROUP CODE | MATERIAL | FINISH | PIN | VERSION |

| MATERIAL | M | FINISH       | F |
|----------|---|--------------|---|
| Zamak    | 1 | Chrome       | 1 |
|          |   | Black coated | 2 |



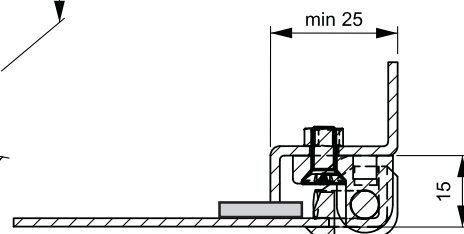
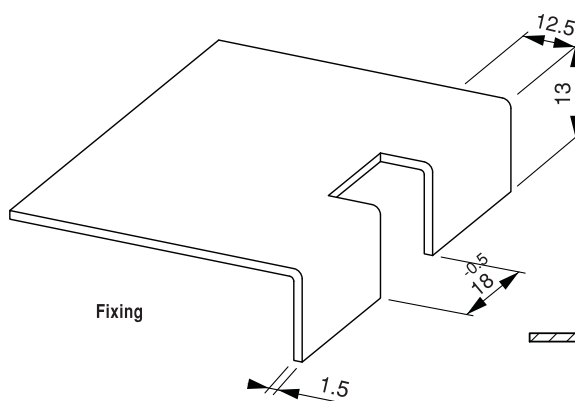
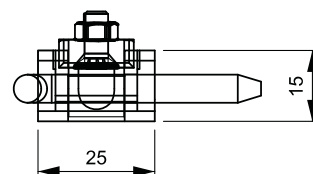
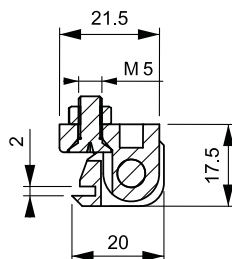


## CORNER HINGE

197



LH/RH



- Corner hinge. Suitable for steel panels with a thickness of between 1.5mm
- Hinge pin available in three types.

## APPLICATIONS

Small electric panels

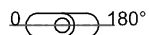
## MATERIAL

BODY: Polyamide DIN-EN ISO 1043-1

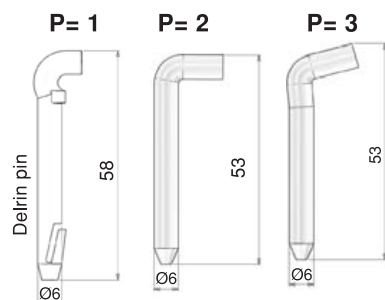
PA6 GFR 30

PIN : Steel and Poliasetal (Delrin)

## Hinge Rotation Angle



P = Pin



## PRODUCT CODE

|            |          |   |        |   |     |
|------------|----------|---|--------|---|-----|
| 197        | 2        | - | 0      | - | P   |
| GROUP CODE | MATERIAL |   | FINISH |   | PIN |

|          |   |           |   |
|----------|---|-----------|---|
| MATERIAL | M | FINISH    | F |
| Plastic  | 2 | No Finish | 0 |

098

CORNER HINGE



LH/RH



- Corner hinge. Suitable for steel panels with a thickness of between 2.0 mm
- Steel hinge pin.

#### APPLICATIONS

Big sized electric panels

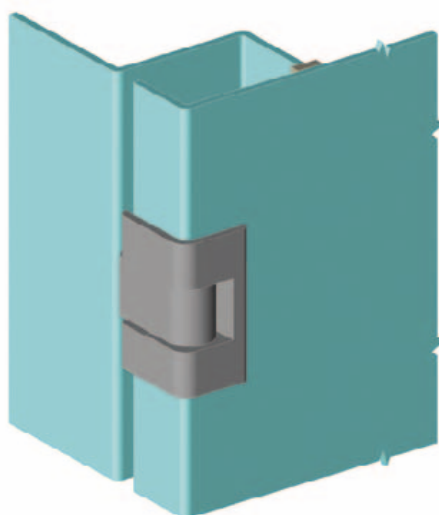
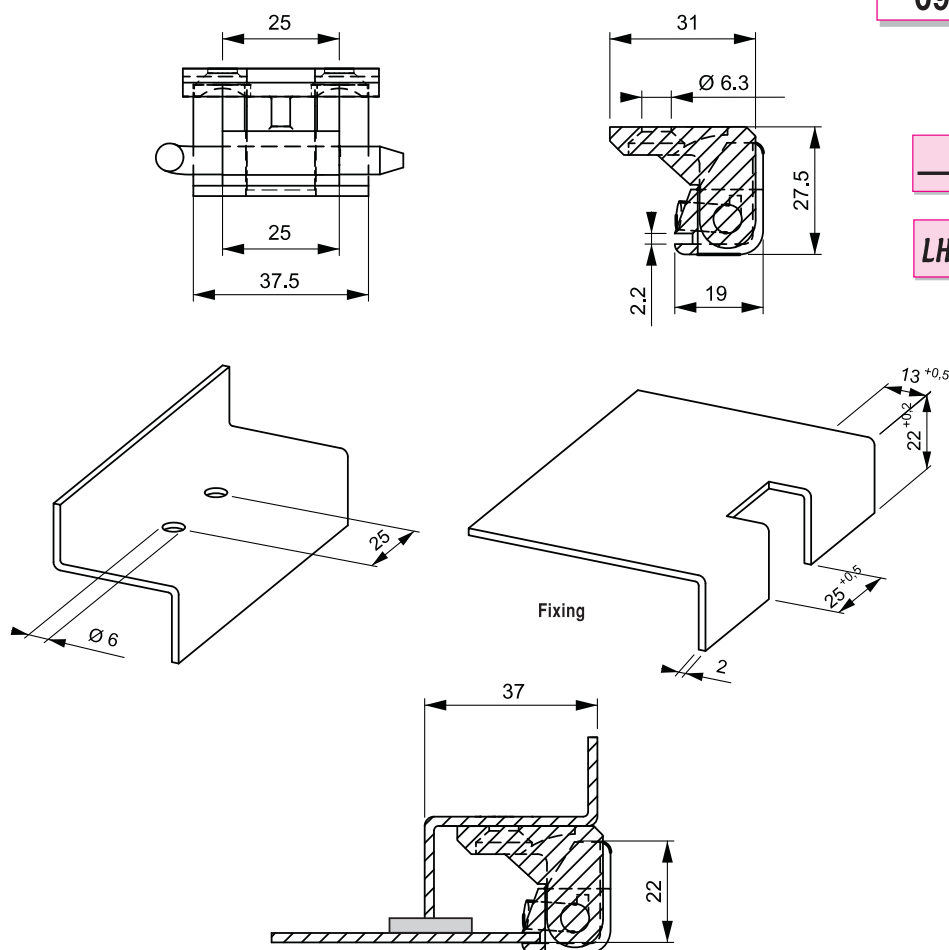
#### MATERIAL

BODY: Zamak DIN-EN 1774-ZnAl4Cu1

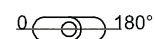
PIN : Steel

#### FINISH

Black coated

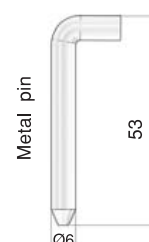


Hinge Rotation Angle



P = Pin

P = 2



#### PRODUCT CODE

|            |          |   |        |   |     |
|------------|----------|---|--------|---|-----|
| 098        | 1        | - | F      | - | 2   |
| GROUP CODE | MATERIAL |   | FINISH |   | PIN |

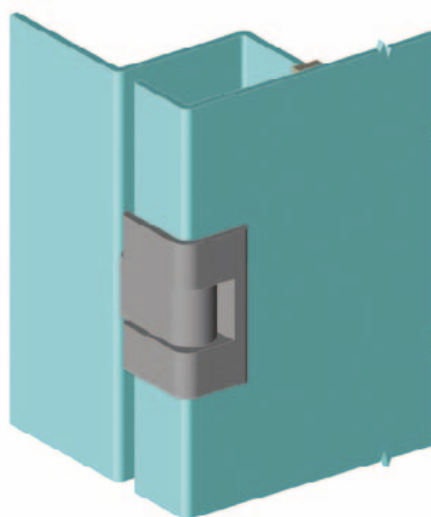
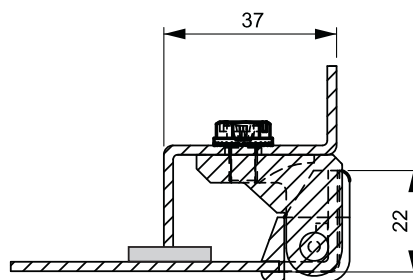
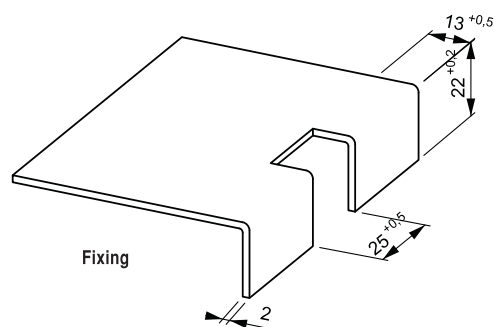
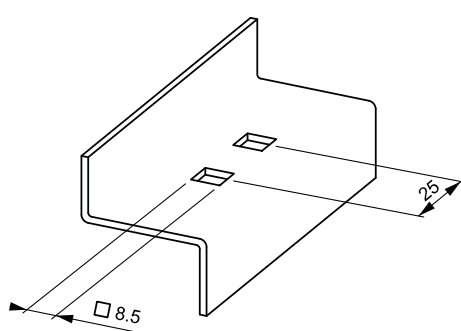
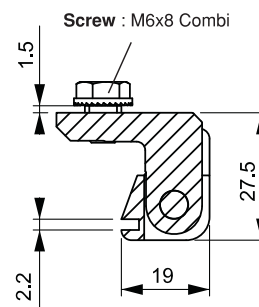
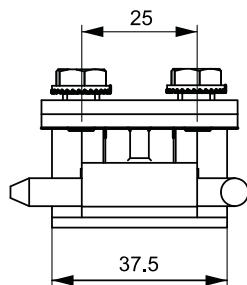
| MATERIAL | M | FINISH       | F |
|----------|---|--------------|---|
| Zamak    | 1 | Chrome       | 1 |
|          |   | Black coated | 2 |

## CORNER HINGE

298



LH/RH



- Corner hinge. Suitable for steel panels with a thickness of between 2.0 mm
- Steel hinge pin.
- With M6 threaded studs for internal fastening.

## APPLICATIONS

Big sized electric panels

## MATERIAL

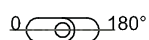
BODY: Zamak DIN-EN 1774-ZnAl4Cu1

PIN : Steel

## FINISH

Black coated

## Hinge Rotation Angle



P = Pin

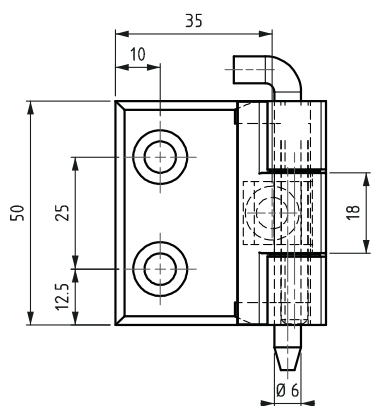
P = 2



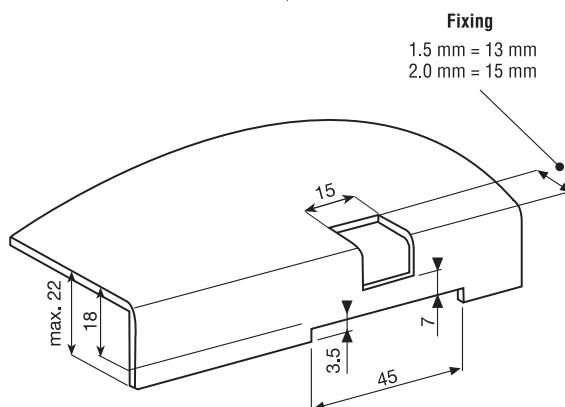
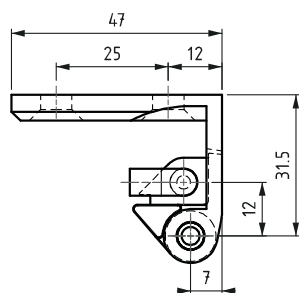
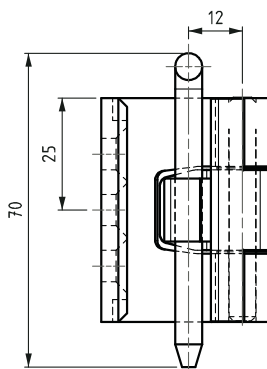
## PRODUCT CODE

|            |          |   |        |   |     |
|------------|----------|---|--------|---|-----|
| 298        | 1        | - | F      | - | 2   |
| GROUP CODE | MATERIAL |   | FINISH |   | PIN |

| MATERIAL | M | FINISH       | F |
|----------|---|--------------|---|
| Zamak    | 1 | Chrome       | 1 |
|          |   | Black coated | 2 |

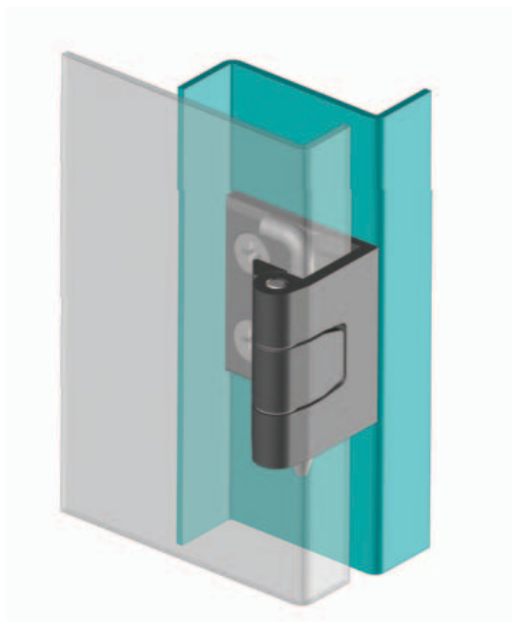


**V** : 1



Fixing

Fixing  
1.5 mm = 13 mm  
2.0 mm = 15 mm



**398**

**CORNER HINGE**

**New**



**LH/RH**



- Left and right versions are possible.
- Max opening angle 180 degrees.
- Special cut-out is necessary for the cabinet door.
- Stainless steel spacers are used between the hinge parts.
- Suitable for 25 mm door bend cabinets.

#### APPLICATIONS

Profiles and big sized panels

#### MATERIAL

BODY: Zamak DIN-EN 1774-ZnAl4Cu1

PIN : Steel

#### FINISH

Black coated or chrome plated

#### PRODUCT CODE

|            |          |   |          |   |          |
|------------|----------|---|----------|---|----------|
| <b>398</b> | <b>1</b> | - | <b>F</b> | - | <b>1</b> |
| GROUP CODE | MATERIAL |   | FINISH   |   | VERSION  |

| MATERIAL | M | FINISH       | F |
|----------|---|--------------|---|
| Zamak    | 1 | Chrome       | 1 |
|          |   | Black coated | 2 |

## CORNER HINGE

398

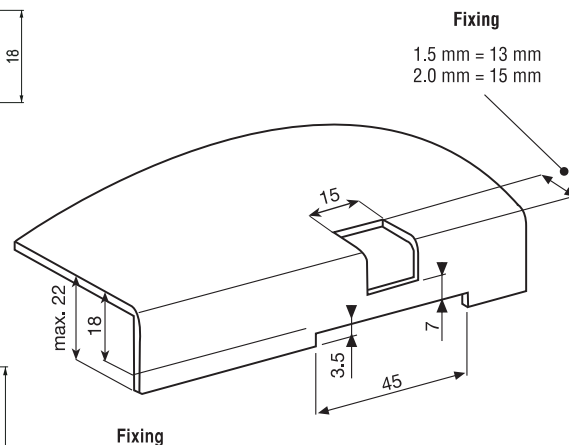
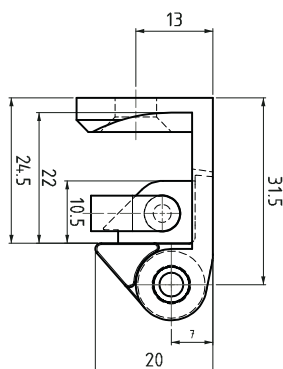
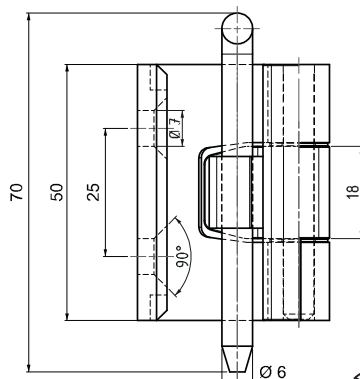
V : 2



New



LH/RH



- Left and right versions are possible.
- Max opening angle 180 degrees.
- Special cut-out is necessary for the cabinet door.
- Stainless steel spacers are used between the hinge parts.
- Suitable for 25 mm door bend cabinets.

## APPLICATIONS

Profiles and big sized panels

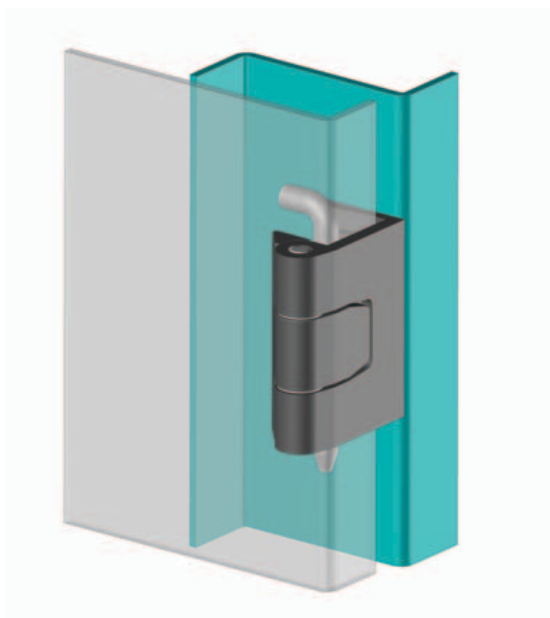
## MATERIAL

BODY: Zamak DIN-EN 1774-ZnAl4Cu1

PIN : Steel

## FINISH

Black coated or chrome plated



## PRODUCT CODE

398

1

F

2

GROUP CODE

MATERIAL

FINISH

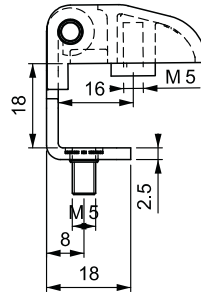
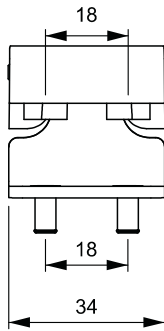
VERSION

| MATERIAL | M |
|----------|---|
| Zamak    | 1 |

| FINISH       | F |
|--------------|---|
| Chrome       | 1 |
| Black coated | 2 |

**400**

**CORNER HINGE**



**LH/RH**



- For fitting to corner of doors with 16.5mm bend.
- M5 stud version available. Polyamide mounting supplied for fixing body.
- Budget priced, polyamide version available.

**APPLICATIONS**

Electric panels, machinery covers

**MATERIAL**

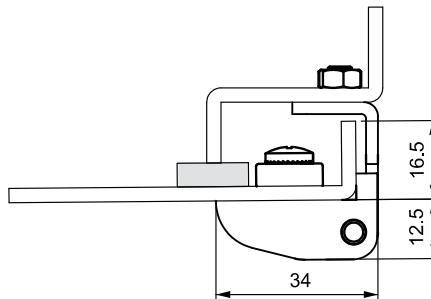
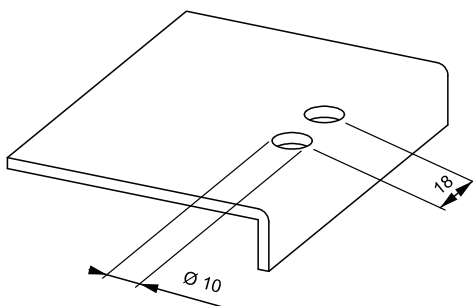
BODY : Zamak DIN-EN 1774-ZnAl4Cu1  
or PA6 GFR 30

FIXED PART : Steel

PIN : Steel

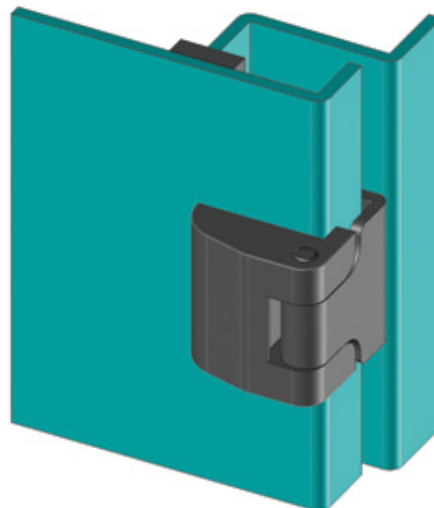
**FINISH**

Black coated

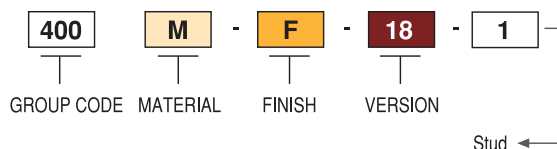


Body: Zamak or Polyamide

Fixing part

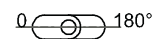


**PRODUCT CODE**



| MATERIAL | M | FINISH       | F |
|----------|---|--------------|---|
| Zamak    | 1 | Black coated | 2 |
| Plastic  | 2 | No Finish    | 0 |

Hinge Rotation Angle



## CORNER HINGE

200

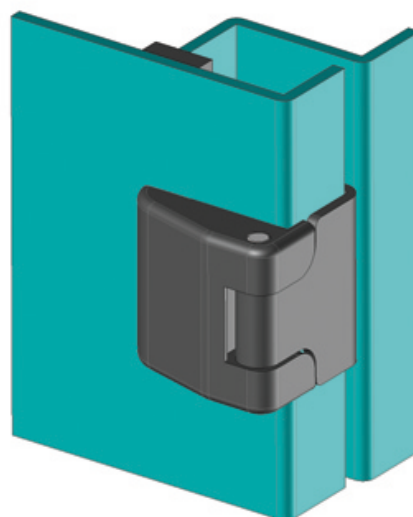
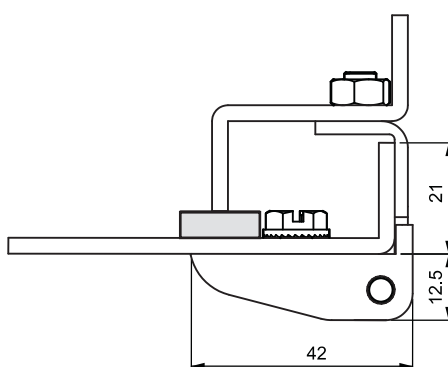
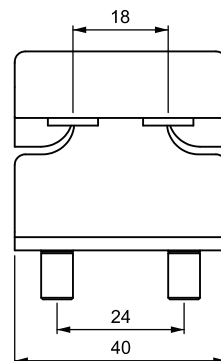
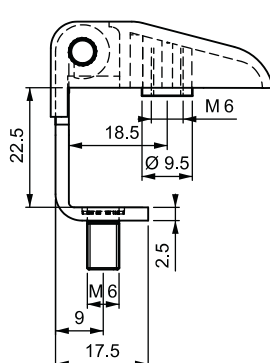
Hole



Stud



LH/RH



- For fitting to corner of doors with 21mm bend.
- Stud version available, using M6 studs.

## APPLICATIONS

Electric panels, machinery covers

## MATERIAL

BODY : Zamak DIN-EN 1774-ZnAl4Cu1

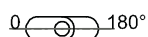
FIXED PART : Steel

PIN : Steel

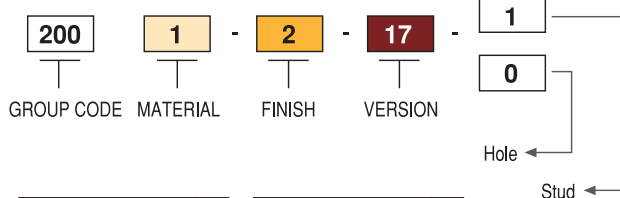
## FINISH

Black coated

## Hinge Rotation Angle



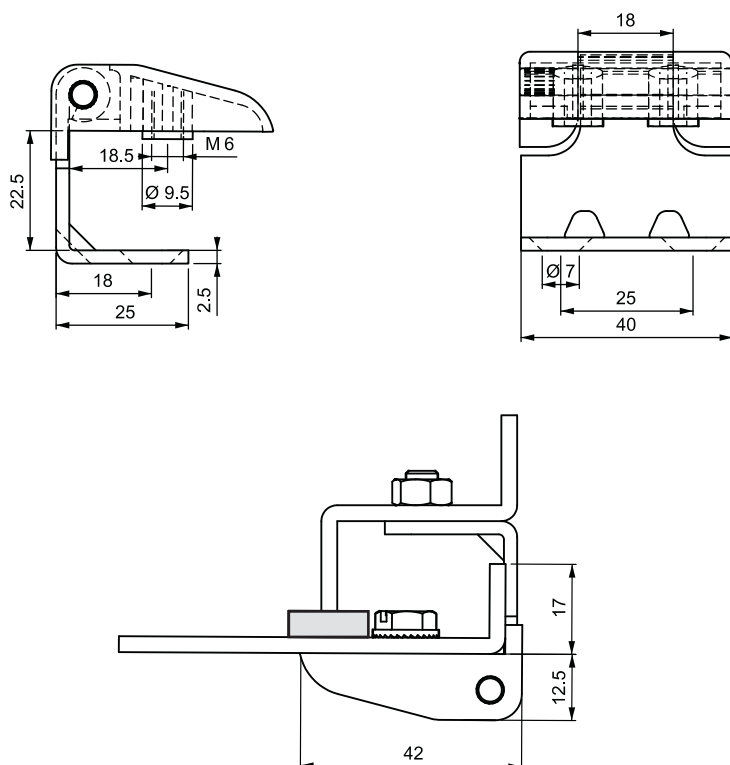
## PRODUCT CODE



| MATERIAL | M | FINISH       | F |
|----------|---|--------------|---|
| Zamak    | 1 | Black coated | 2 |

200

CORNER HINGE



LH/RH



#### APPLICATIONS

Electric panels, machinery covers

#### MATERIAL

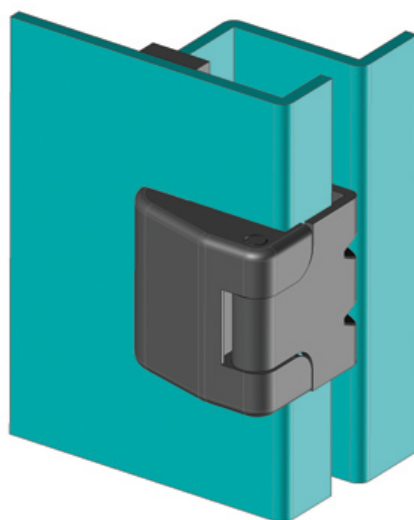
BODY : Zamak DIN-EN 1774-ZnAl4Cu1

FIXED PART : Steel

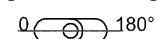
PIN : Steel

#### FINISH

Black coated



Hinge Rotation Angle



#### PRODUCT CODE

|            |          |   |        |   |         |   |      |
|------------|----------|---|--------|---|---------|---|------|
| 200        | 1        | - | 2      | - | 25      | - | 0    |
| GROUP CODE | MATERIAL |   | FINISH |   | VERSION |   |      |
|            |          |   |        |   |         |   | Hole |

| MATERIAL | M | FINISH       | F |
|----------|---|--------------|---|
| Zamak    | 1 | Black coated | 2 |

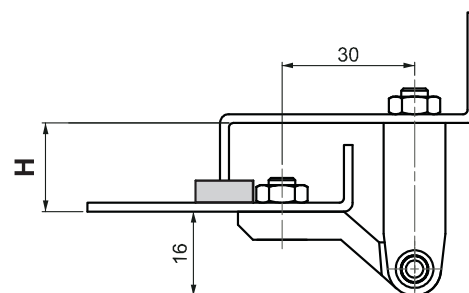
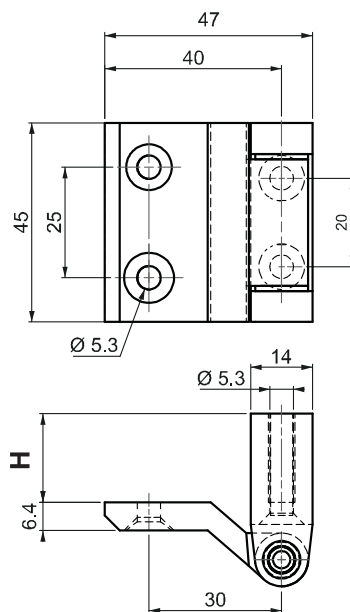


## CORNER HINGE

100



LH/RH



- Designed for plain / flush mounted doors and side mounted doors.
- For side mounted doors with a bend of between 2 mm and 30 mm.
- Hardened steel hinge pin.

## APPLICATIONS

Electric panels, machinery covers

## MATERIAL

BODY : Zamak DIN-EN 1774-ZnAl4Cu1

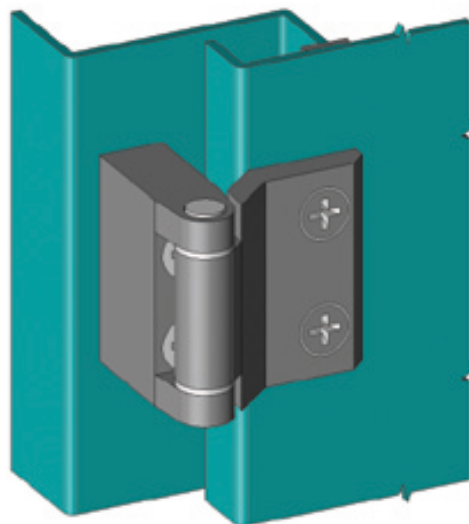
PIN : Steel

BEARING: Delrin

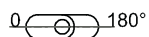
## FINISH

Black coated

| H  |
|----|
| 2  |
| 3  |
| 5  |
| 7  |
| 10 |
| 15 |
| 17 |
| 20 |
| 25 |
| 27 |
| 30 |



## Hinge Rotation Angle

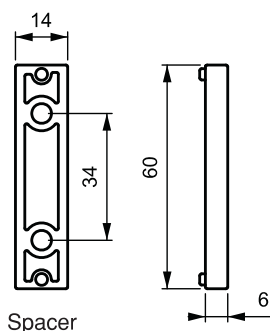
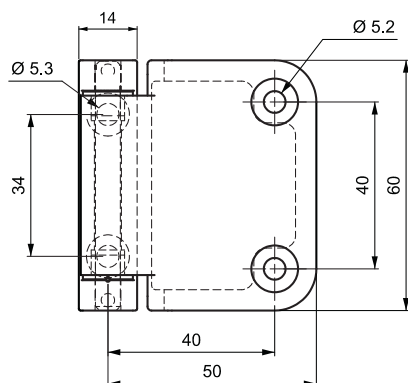


## PRODUCT CODE

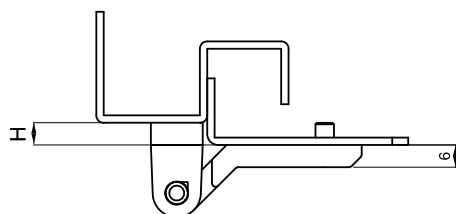
|            |          |   |        |   |        |
|------------|----------|---|--------|---|--------|
| 100        | 1        | - | 2      | - | H      |
| GROUP CODE | MATERIAL |   | FINISH |   | HEIGHT |

| MATERIAL | M | FINISH       | F |
|----------|---|--------------|---|
| Zamak    | 1 | Black coated | 2 |

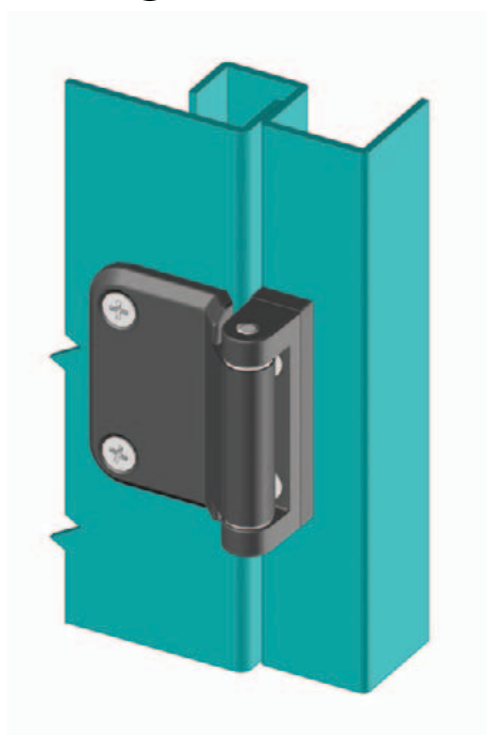
V : 3



Spacer version  
600 1-2-H-3



| H  |
|----|
| 06 |
| 12 |
| 15 |



600

CORNER HINGE

New



LH/RH



- Design for plain side mounted doors
- For side mounted doors with a bend of 0-15 mm.
- Pin and plastic guides will be supplied separately.

#### APPLICATIONS

Electric panels, machinery covers

#### MATERIAL

BODY : Zamak DIN-EN 1774-ZnAl4Cu1

PIN : Steel

BEARING: Delrin

#### FINISH

Black coated

#### PRODUCT CODE

|            |          |   |        |   |        |   |         |
|------------|----------|---|--------|---|--------|---|---------|
| 600        | 1        | - | 2      | - | H      | - | V       |
| GROUP CODE | MATERIAL |   | FINISH |   | HEIGHT |   | VERSION |

| MATERIAL | M | FINISH       | F |
|----------|---|--------------|---|
| Zamak    | 1 | Black coated | 2 |

## HVAC HINGE - ADJUSTABLE (2D)

600

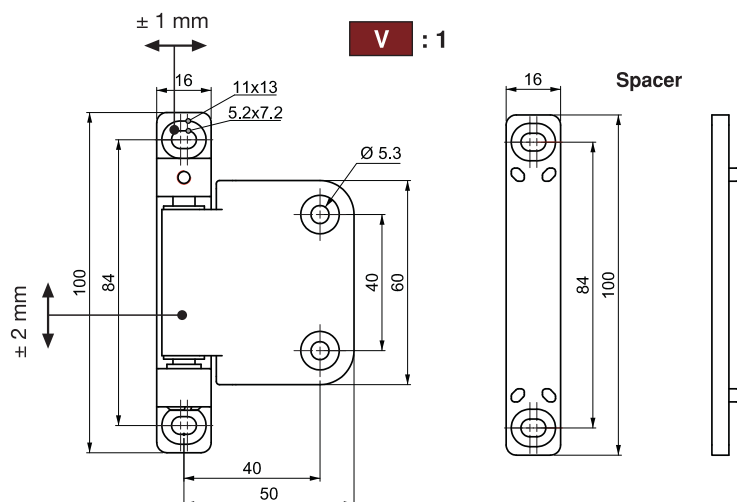


New



LH/RH

2 D



- Design for plain side mounted doors
- For side mounted doors with a bend of 0-15 mm.
- Hinge is supplied totally assembled to decrease the customer labour costs.
- 2 dimensional door adjustments are possible.
- Axial adjustment is  $\pm 2$  mm ,Radial adjustment is  $\pm 1$  mm.

## APPLICATIONS

Air condition central units, electric panels, machinery covers

## MATERIAL

BODY : Zamak DIN-EN 1774-ZnAl4Cu1

PIN : Steel

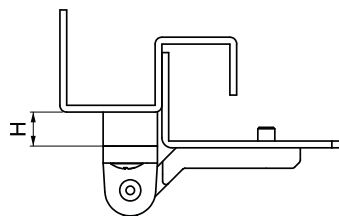
BEARING: Delrin

## FINISH

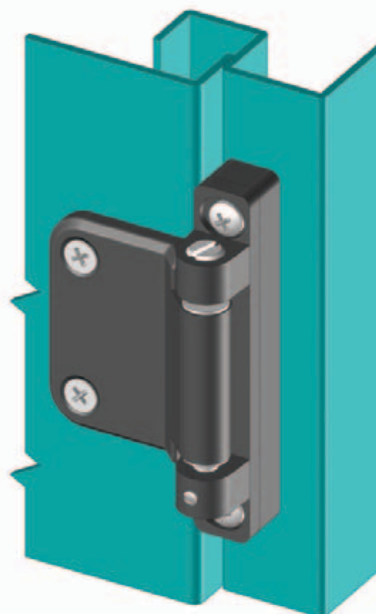
Black coated

## Spacer application

600 1-2-H-1



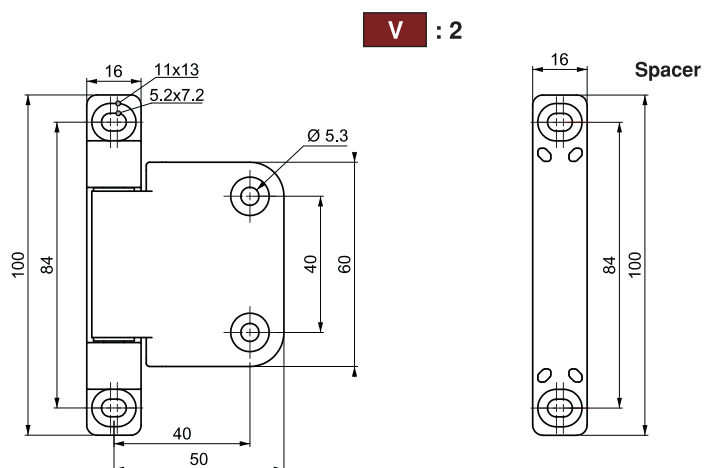
| H  |
|----|
| 05 |
| 10 |
| 15 |



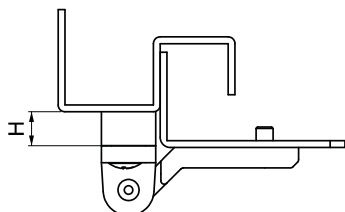
## PRODUCT CODE

|            |          |   |        |   |        |   |         |
|------------|----------|---|--------|---|--------|---|---------|
| 600        | 1        | - | 2      | - | H      | - | 1       |
| GROUP CODE | MATERIAL |   | FINISH |   | HEIGHT |   | VERSION |

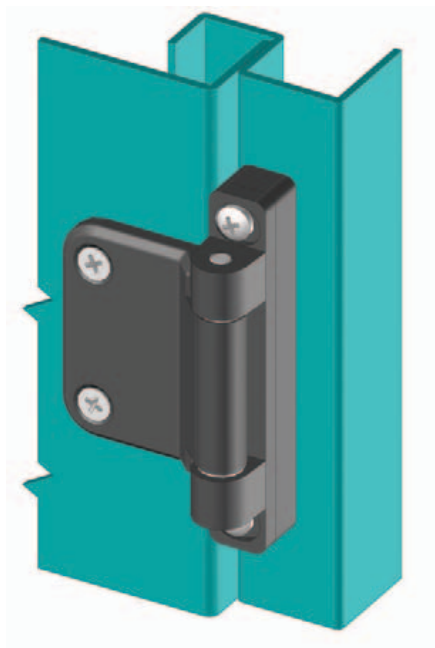
| MATERIAL | M | FINISH       | F |
|----------|---|--------------|---|
| Zamak    | 1 | Black coated | 2 |



**Spacer application**  
600 1-2-H-2



| H  |
|----|
| 05 |
| 10 |
| 15 |



600

HVAC HINGE

New



LH/RH



- Design for plain side mounted doors
- For side mounted doors with a bend of 0-15 mm.
- Hinge is supplied totally assembled to decrease the customer labour costs.

#### APPLICATIONS

Air condition central units, electric panels, machinery covers

#### MATERIAL

BODY : Zamak DIN-EN 1774-ZnAl4Cu1  
PIN : Steel  
BEARING: Delrin

#### FINISH

Black coated

#### PRODUCT CODE

|            |          |   |        |   |        |   |         |
|------------|----------|---|--------|---|--------|---|---------|
| 600        | 1        | - | 2      | - | H      | - | 2       |
| GROUP CODE | MATERIAL |   | FINISH |   | HEIGHT |   | VERSION |

| MATERIAL | M | FINISH       | F |
|----------|---|--------------|---|
| Zamak    | 1 | Black coated | 2 |

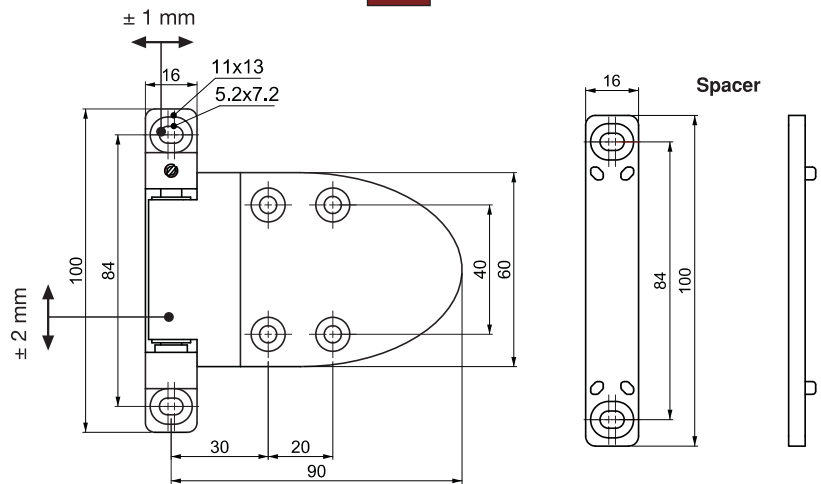
## HVAC HINGE - ADJUSTABLE (2D)

700

New

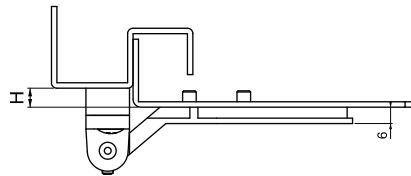
LH/RH

2 D



## Spacer application

700 1-2-H-1



| H  |
|----|
| 2  |
| 7  |
| 12 |

- Design for plain side mounted doors
- For side mounted doors with a bend of 2-12 mm.
- Hinge is supplied totally assembled to decrease the customer labour costs.
- 2 dimensional door adjustments are possible.
- Axial adjustment is  $\pm 2$  mm .Radial adjustment is  $\pm 1$  mm.

## APPLICATIONS

Air condition central units, electric panels, machinery covers

## MATERIAL

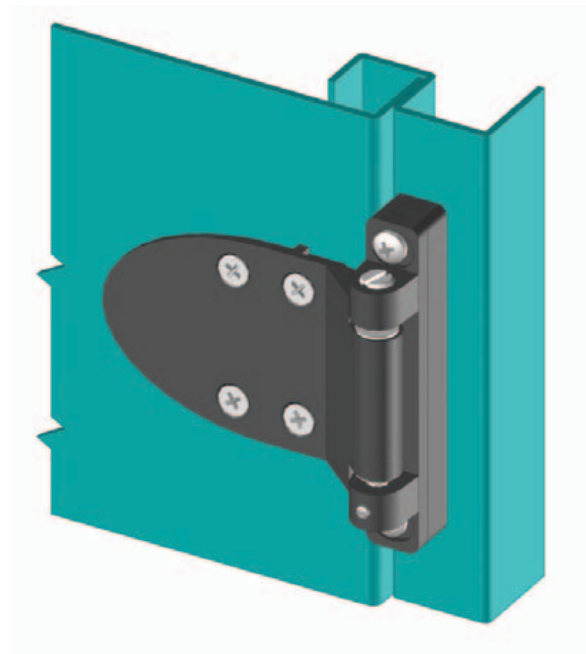
BODY : Zamak DIN-EN 1774-ZnAl4Cu1

PIN : Steel

BEARING: Delrin

## FINISH

Black coated

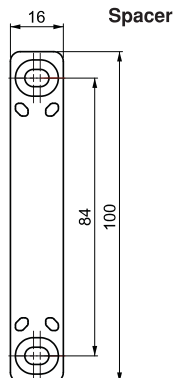
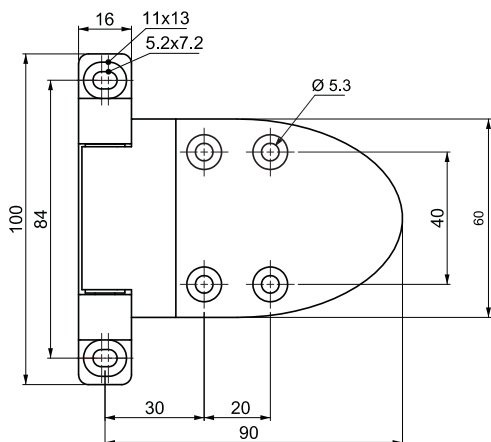


## PRODUCT CODE

|            |          |   |        |   |        |   |         |
|------------|----------|---|--------|---|--------|---|---------|
| 700        | 1        | - | 2      | - | H      | - | 1       |
| GROUP CODE | MATERIAL |   | FINISH |   | HEIGHT |   | VERSION |

| MATERIAL | M | FINISH       | F |
|----------|---|--------------|---|
| Zamak    | 1 | Black coated | 2 |

V : 2



700

HVAC HINGE

New

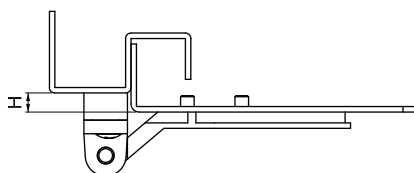


LH/RH



Spacer application

700 1-2-H-2



H

2

7

12

- Design for plain side mounted doors
- For side mounted doors with a bend of 2-12 mm.
- Hinge is supplied totally assembled to decrease the customer labour costs.

#### APPLICATIONS

Air condition central units, electric panels, machinery covers

#### MATERIAL

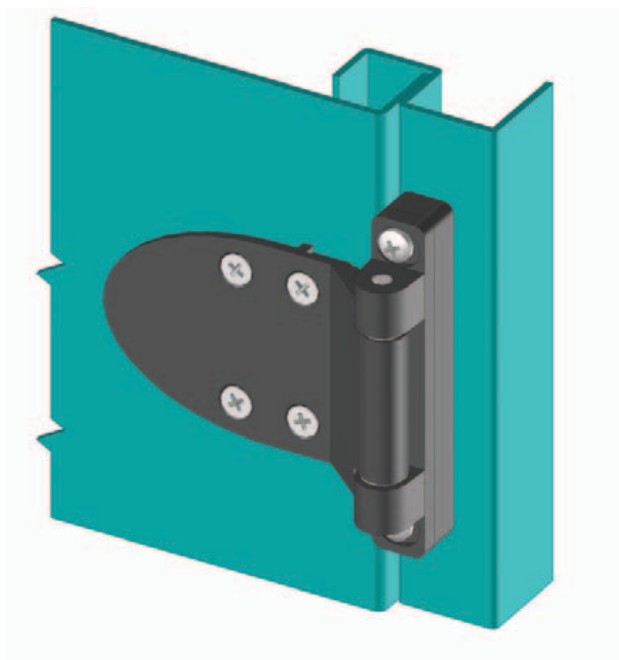
BODY : Zamak DIN-EN 1774-ZnAl4Cu1

PIN : Steel

BEARING: Delrin

#### FINISH

Black coated



#### PRODUCT CODE

|            |          |   |        |   |        |   |         |
|------------|----------|---|--------|---|--------|---|---------|
| 700        | 1        | - | 2      | - | H      | - | 2       |
| GROUP CODE | MATERIAL |   | FINISH |   | HEIGHT |   | VERSION |

| MATERIAL | M |
|----------|---|
| Zamak    | 1 |

| FINISH       | F |
|--------------|---|
| Black coated | 2 |

Flat Hinges

| Group code | Product name       |
|------------|--------------------|
| 299        | Leaf hinge         |
| 199        | Leaf hinge         |
| 099        | Leaf hinge         |
| 399        | Leaf hinge         |
| 699        | Lift - off hinge   |
| 499        | Leaf hinge         |
| 599        | Leaf hinge         |
| 799        | Leaf hinge         |
| 600        | Hinge with bearing |
| 600        | Hvac hinge         |
| 700        | Hvac hinge         |
| 300        | Hvac hinge         |
| 500        | Hvac hinge         |
| 100        | Hinge with bearing |
| 693        | Hinge with bearing |
|            |                    |

**Page**

220

221

222 - 223

224 - 225

226 - 227

228

229

230

231

232 - 233

234 - 235

236

237

238

239



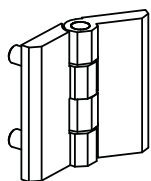


## LEAF HINGE

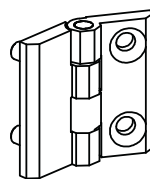
299



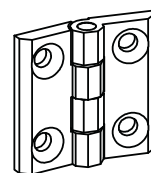
LH/RH



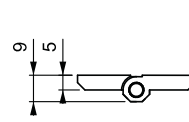
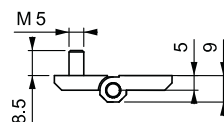
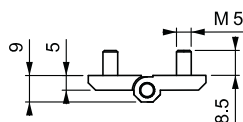
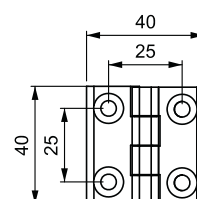
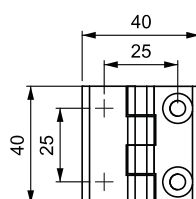
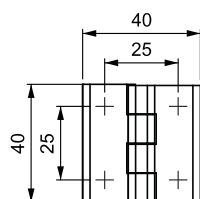
V : 1



V : 2



V : 3



- Generally used for plain / flush mounted doors.
- Stud versions fitted with M5 x 8.5mm threaded stud.
- Stainless steel (AISI 304) hinge pin. Maximum hinge rotation 270°.

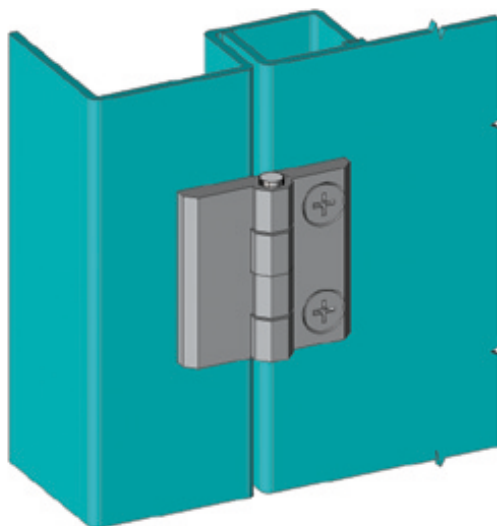
## APPLICATIONS

Electric panels, build-in covers.

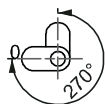
## MATERIAL

BODY : Zamak DIN-EN 1774-ZnAl4Cu1

PIN : Stainless Steel



## Hinge Rotation Angle



## PRODUCT CODE

299

M

F

V

GROUP CODE

MATERIAL

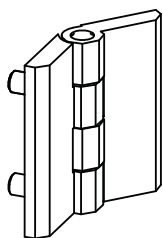
FINISH

VERSION

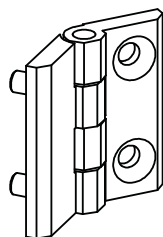
| MATERIAL | M | FINISH       | F |
|----------|---|--------------|---|
| Zamak    | 1 | Chrome       | 1 |
|          |   | Black Coated | 2 |
| Plastic  | 2 | No finish    | 0 |

**199**

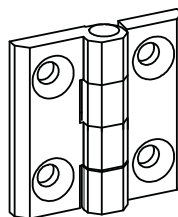
**LEAF HINGE**



**V : 1**



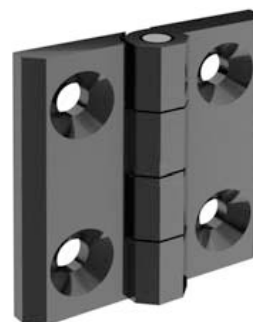
**V : 2**



**V : 3**



**LH/RH**



- Generally used for plain / flush mounted doors.
- Stud versions fitted with M6 x 12mm threaded stud.
- Stainless steel (AISI 304) hinge pin. Maximum hinge rotation 270°.

**APPLICATIONS**

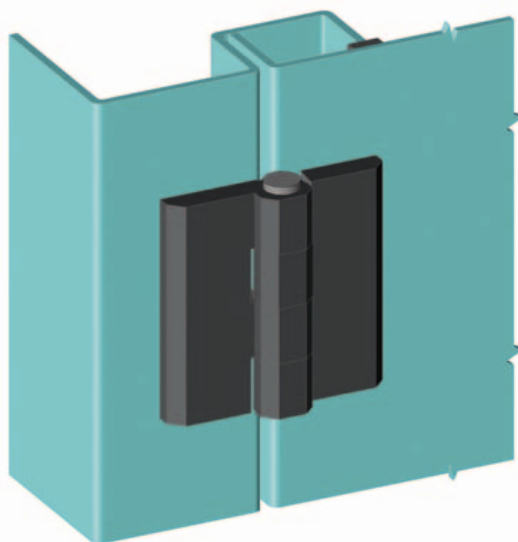
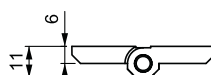
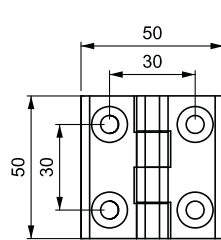
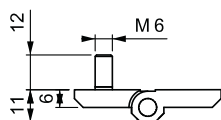
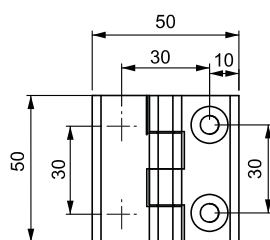
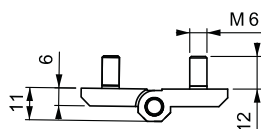
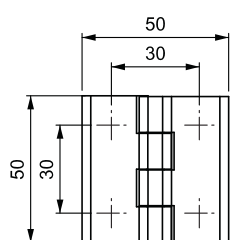
Electric panels, build-in covers.

**MATERIAL**

BODY : Polyamide DIN-EN ISO 1043-1

PA 6 GFR 30

PIN : Stainless Steel

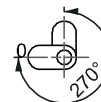


**PRODUCT CODE**

|            |          |   |          |   |          |
|------------|----------|---|----------|---|----------|
| <b>199</b> | <b>2</b> | - | <b>0</b> | - | <b>V</b> |
| GROUP CODE | MATERIAL |   | FINISH   |   | VERSION  |

|                 |          |               |          |
|-----------------|----------|---------------|----------|
| <b>MATERIAL</b> | <b>M</b> | <b>FINISH</b> | <b>F</b> |
| Plastic         | <b>2</b> | No finish     | <b>0</b> |

Hinge Rotation Angle

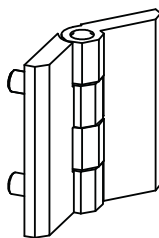


## LEAF HINGE

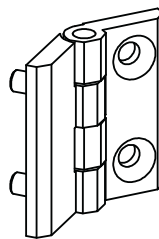
099



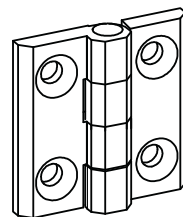
LH/RH



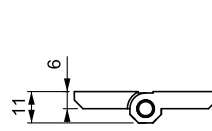
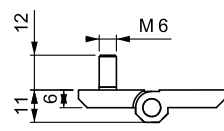
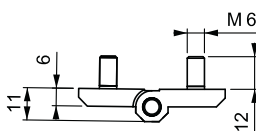
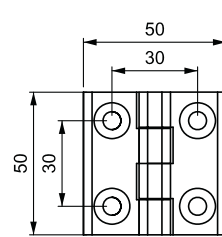
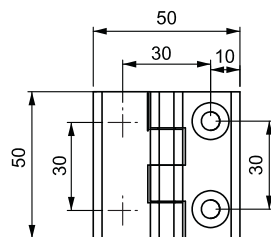
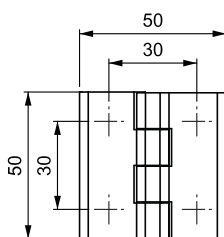
V : 1



V : 2



V : 4



- Generally used for plain / flush mounted doors.
- Stud versions fitted with M6 x 12mm threaded stud.
- Stainless steel (AISI 304) hinge pin. Maximum hinge rotation 270°.
- Available in three dimensions: 50 mm x 50 mm, 50 mm x 63 mm and 50 mm x 76 mm. Hole or stud fixing.

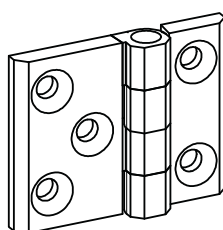
## APPLICATIONS

Electric panels, build-in covers.

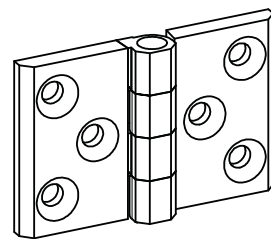
## MATERIAL

BODY: Zamak DIN-EN 1774-ZnAl4Cu1

PIN : Stainless Steel

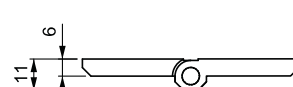
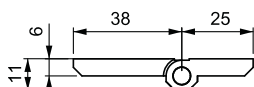
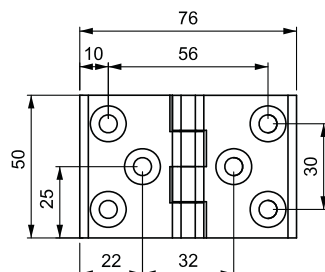
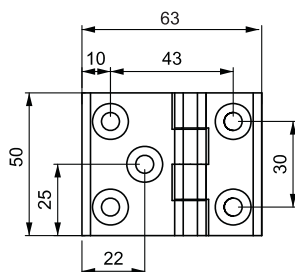
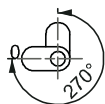


V : 5



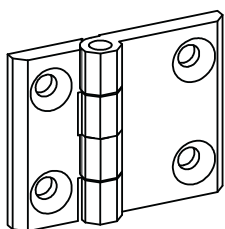
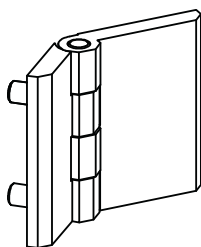
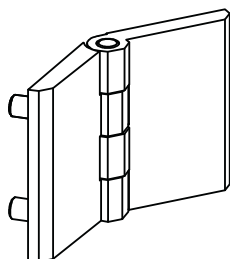
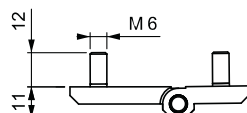
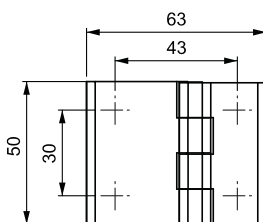
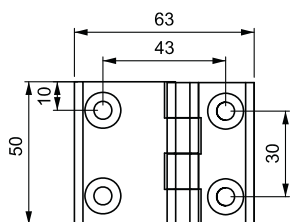
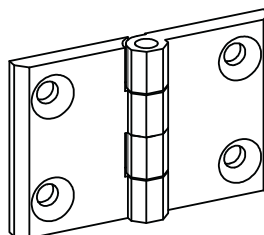
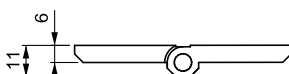
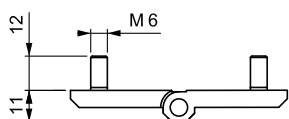
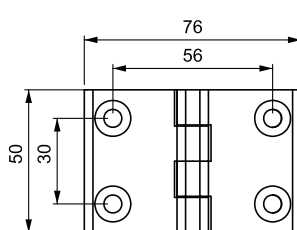
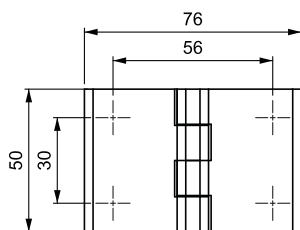
V : 6

## Hinge Rotation Angle



099

LEAF HINGE


**V : 7**

**V : 8**

**V : 9**

**V : 10**


### APPLICATIONS

Electric panels, build-in covers.

### MATERIAL

BODY: Zamak DIN-EN 1774-ZnAl4Cu1

PIN : Stainless Steel

Hinge Rotation Angle



### PRODUCT CODE

099

1

- F -

V

GROUP CODE

MATERIAL

FINISH

VERSION

| MATERIAL | M |
|----------|---|
| Zamak    | 1 |

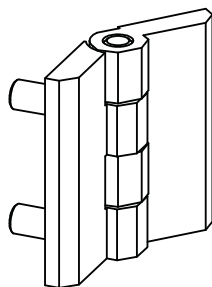
| FINISH       | F |
|--------------|---|
| Chrome       | 1 |
| Black Coated | 2 |

## LEAF HINGE

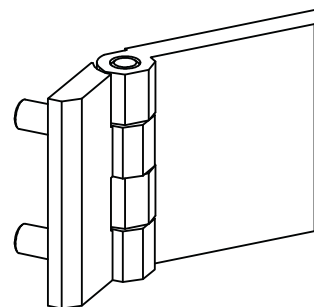
399



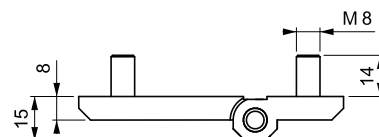
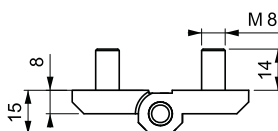
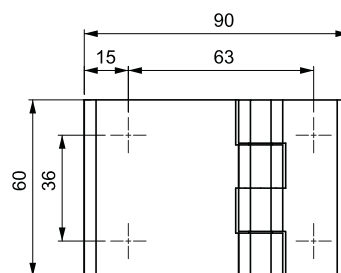
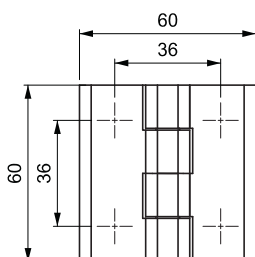
LH/RH



V : 1



V : 2



- Generally, used for plain / flush mounted, isolated, heavy doors.
- Stud versions fitted with M8 x 14mm threaded stud.
- Stainless steel (AISI 304) hinge pin.
- Available in three dimensions:  
60 mm x 60 mm, 60 mm x 90 mm and 60 mm x 120 mm. Hole or stud fixing.

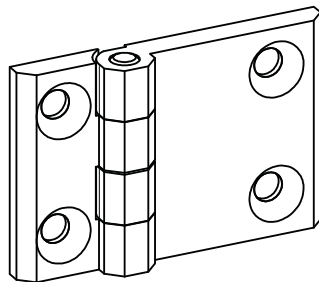
## APPLICATIONS

Electric panels, build-in covers.

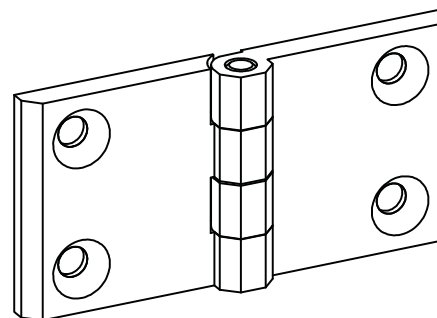
## MATERIAL

BODY: Zamak DIN-EN 1774-ZnAl4Cu1

PIN : Stainless Steel

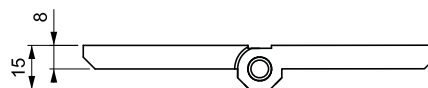
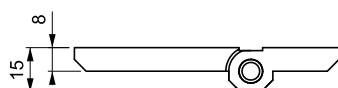
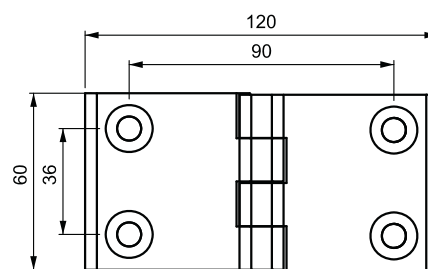
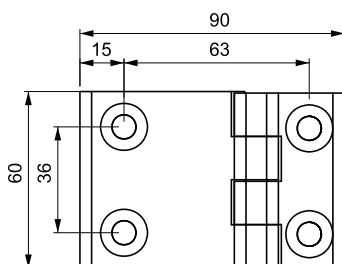
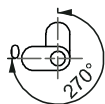


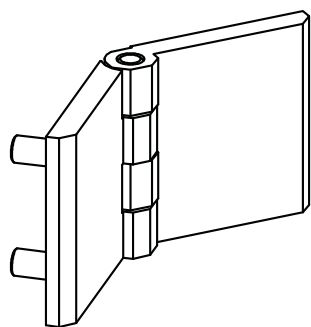
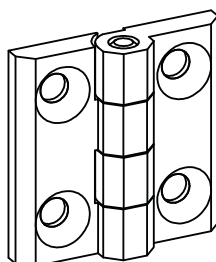
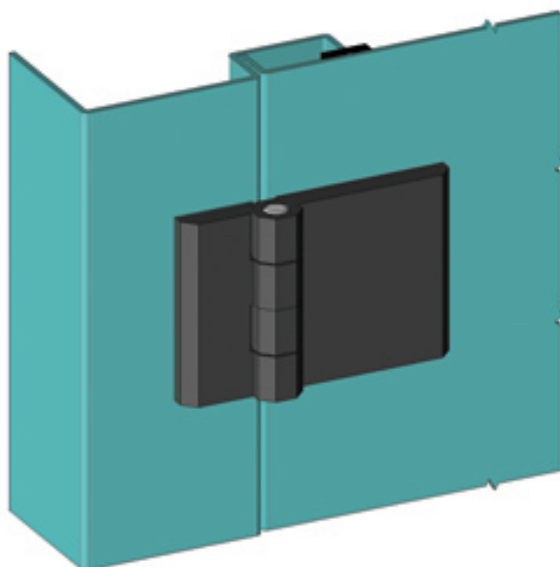
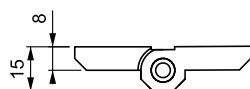
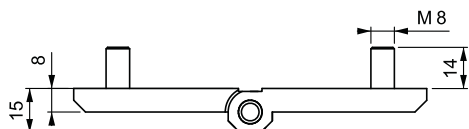
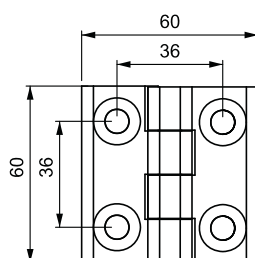
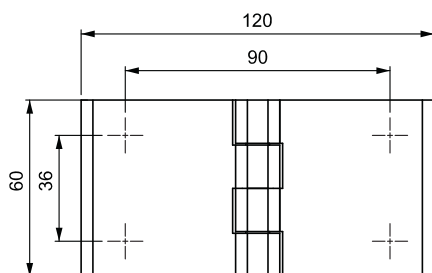
V : 5



V : 6

## Hinge Rotation Angle




**V : 3**

**V : 4**

**399**
**LEAF HINGE**


#### APPLICATIONS

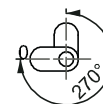
Electric panels, build-in covers.

#### MATERIAL

BODY: Zamak DIN-EN 1774-ZnAl4Cu1

PIN : Stainless Steel

Hinge Rotation Angle



#### PRODUCT CODE

|            |          |   |          |   |          |
|------------|----------|---|----------|---|----------|
| <b>399</b> | <b>1</b> | - | <b>F</b> | - | <b>V</b> |
| GROUP CODE | MATERIAL |   | FINISH   |   | VERSION  |

| MATERIAL | M | FINISH       | F |
|----------|---|--------------|---|
| Zamak    | 1 | Chrome       | 1 |
|          |   | Black Coated | 2 |

## LIFT - OFF HINGE

699

V : 1



New



LH

RH



- Concealed mounting screws prevent external access to the hinge.
- Design for plain/flush mounted doors.
- Lift off hinge.
- Left and right hand opening doors.

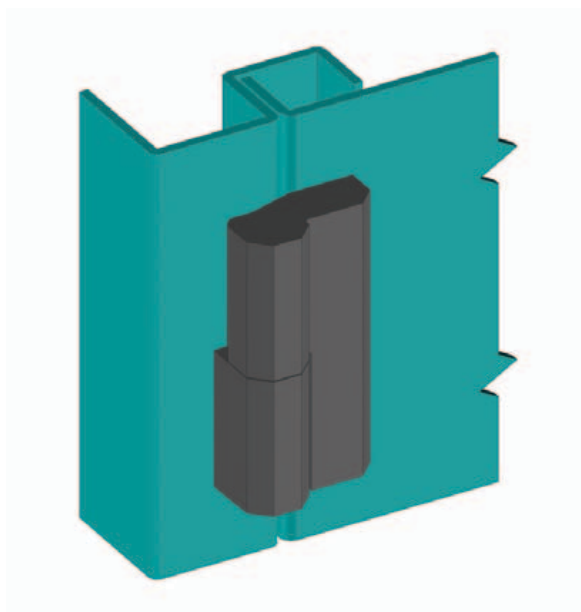
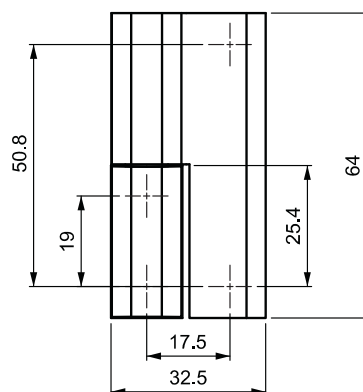
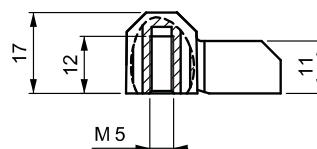
## APPLICATIONS

Electric panels, build-in covers.

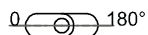
## MATERIAL

BODY : Zamak DIN-EN 1774-ZnAl4Cu1

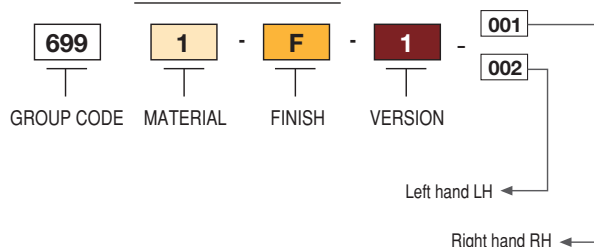
PIN : Stainless Steel



## Hinge Rotation Angle

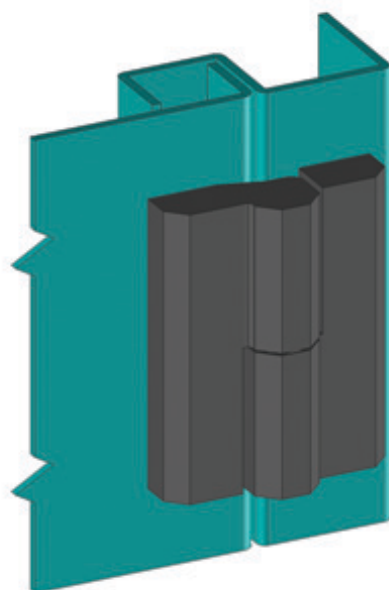
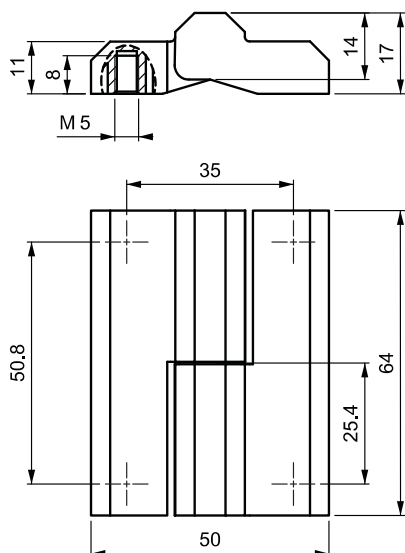


## PRODUCT CODE



| MATERIAL | M | FINISH       | F |
|----------|---|--------------|---|
| Zamak    | 1 | Chrome       | 1 |
|          |   | Black Coated | 2 |

V : 2



699

LIFT - OFF HINGE

New



LH

RH



- Concealed mounting screws prevent external access to the hinge.
- Design for plain/flush mounted doors.
- Lift off hinge.
- Left and right hand opening doors.

#### APPLICATIONS

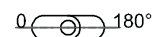
Electric panels, build-in covers.

#### MATERIAL

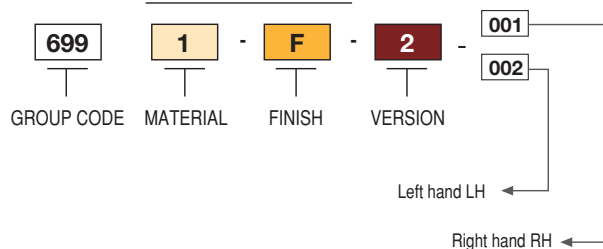
BODY: Zamak DIN-EN 1774-ZnAl4Cu1

PIN : Stainless Steel

Hinge Rotation Angle



#### PRODUCT CODE

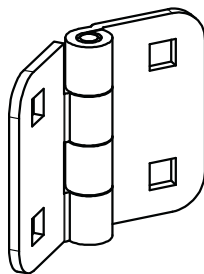


| MATERIAL | M | FINISH       | F |
|----------|---|--------------|---|
| Zamak    | 1 | Chrome       | 1 |
|          |   | Black Coated | 2 |

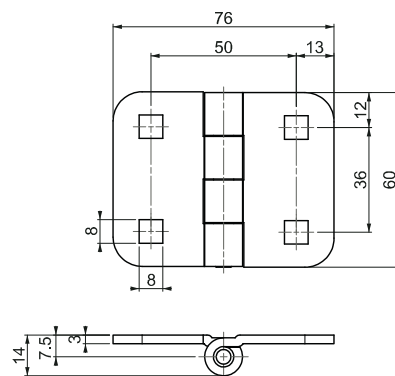


## LEAF HINGE

499



V : 1



- Generally, used for plain / flush mounted, isolated, heavy doors.
- Steel construction provides very high resistance. M8 x 12mm threaded studs have domed heads.

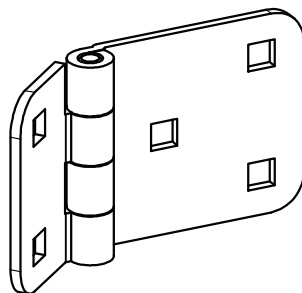
## APPLICATIONS

Electric panels, build-in covers.

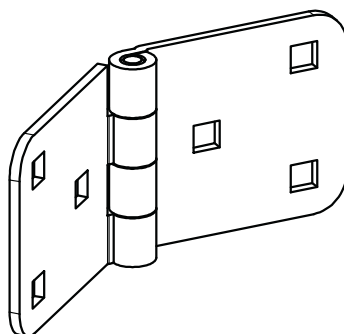
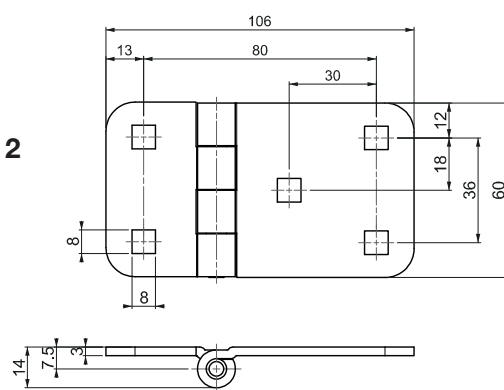
## MATERIAL

BODY: Steel

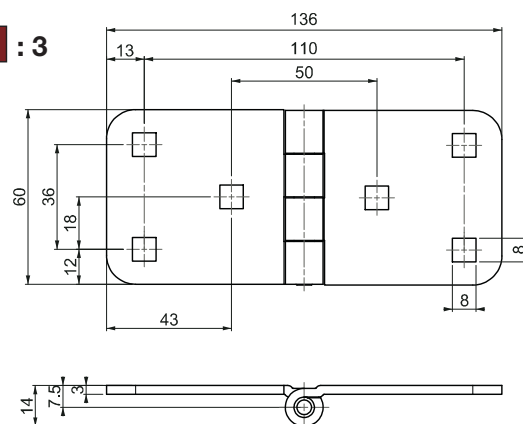
PIN : Stainless Steel

**Note:** Bolts are given


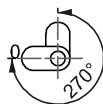
V : 2



V : 3



## Hinge Rotation Angle



## PRODUCT CODE

|            |          |   |        |   |         |
|------------|----------|---|--------|---|---------|
| 499        | 6        | - | F      | - | V       |
| GROUP CODE | MATERIAL |   | FINISH |   | VERSION |

| MATERIAL | M | FINISH       | F |
|----------|---|--------------|---|
| Steel    | 6 | Black coated | 2 |
|          |   | Zinc plated  | 3 |

**599**

**LEAF HINGE**

**New**



**LH/RH**



- Generally, used for plain / flush mounted, isolated, heavy doors.
- Both frame part and door part are screwed -on.
- Hinge Rotation angle is 180°

**APPLICATIONS**

Electric panels, build-in covers.

**MATERIAL**

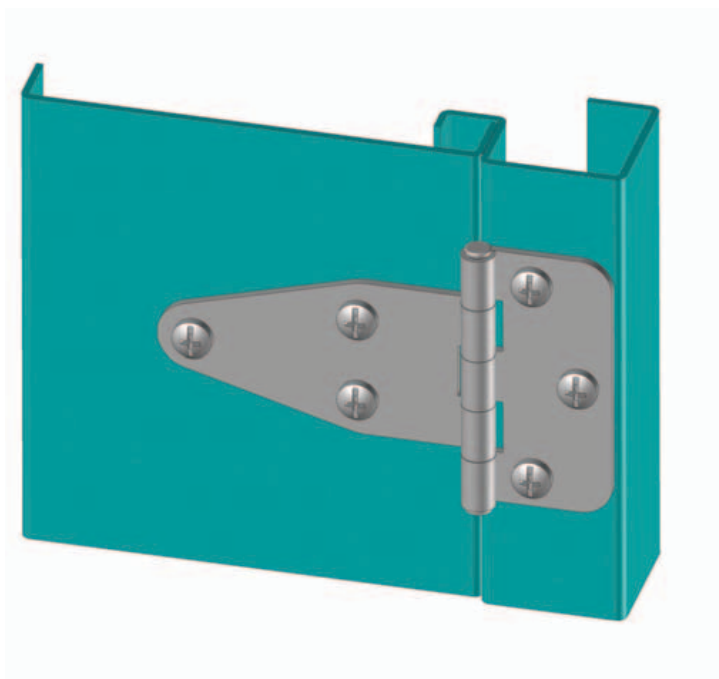
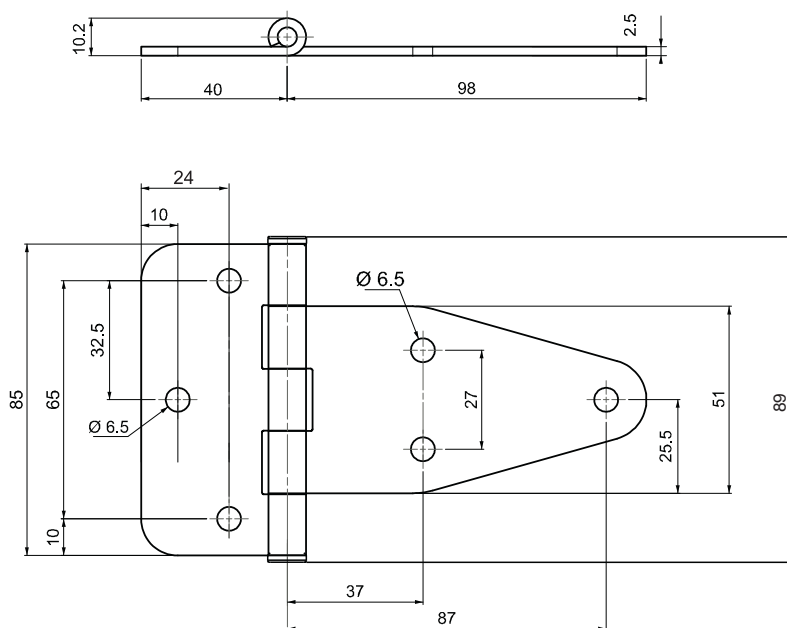
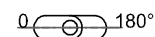
BODY: Steel

PIN : Steel

**FINISH**

Zinc plated or black coated

**Hinge Rotation Angle**



**PRODUCT CODE**

**599**   **6**   **-**   **F**

GROUP CODE

MATERIAL

FINISH

| MATERIAL | M | FINISH       | F |
|----------|---|--------------|---|
| Steel    | 6 | Zinc plated  | 3 |
|          |   | Black coated | 2 |

## LEAF HINGE

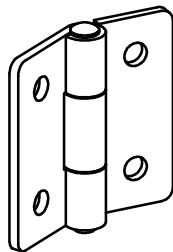
799



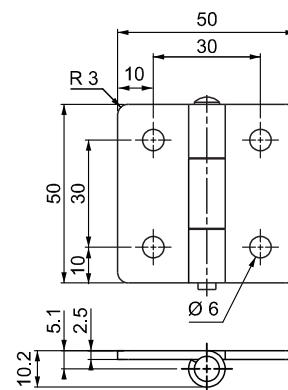
New



LH/RH



V : 1



- Generally, used for plain / flush mounted, isolated, heavy doors.

## APPLICATIONS

Electric panels, build-in covers.

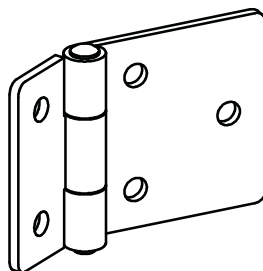
## MATERIAL

BODY: Steel

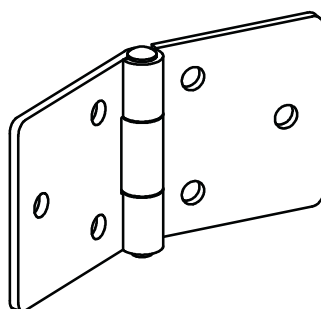
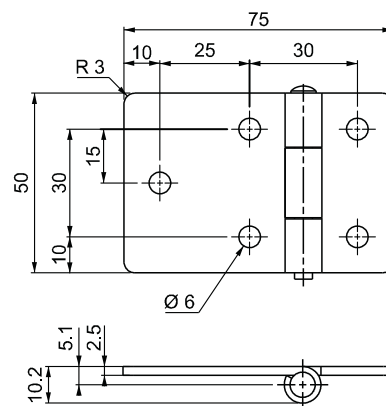
PIN : Stainless Steel

## FINISH

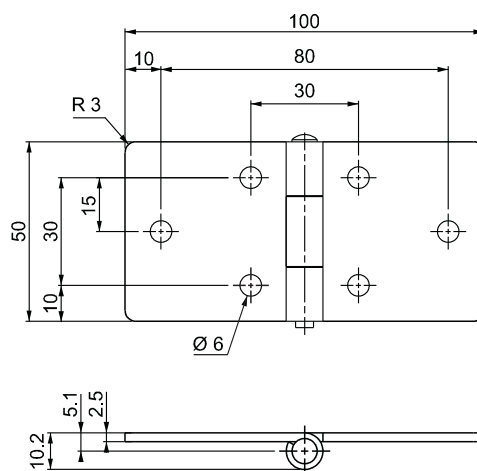
Zinc plated or black coated



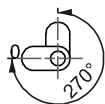
V : 2



V : 3



Hinge Rotation Angle



## PRODUCT CODE

799

6

F

V

GROUP CODE

MATERIAL

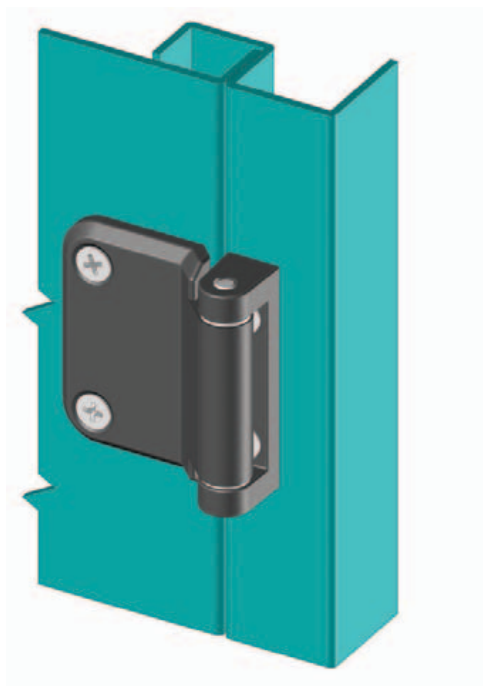
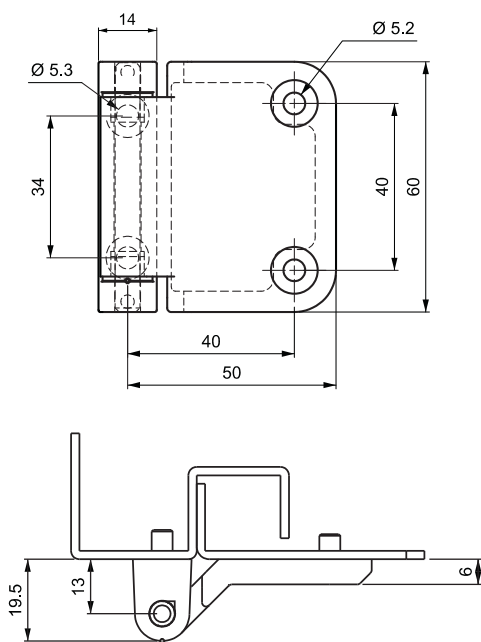
FINISH

VERSION

| MATERIAL | M |
|----------|---|
| Steel    | 6 |

| FINISH       | F |
|--------------|---|
| Zinc plated  | 3 |
| Black coated | 2 |

**V : 3**



**600**

**HINGE WITH BEARING**

**New**



**LH/RH**



- Design for plain flush mounted doors
- Pin and plastic guides will be supplied separately.
- Also can be used for offset doors. Please look at corner hinges section.

**APPLICATIONS**

Electric panels, build-in covers.

**MATERIAL**

BODY : Zamak DIN-EN 1774-ZnAl4Cu1

PIN : Steel

BEARING : Delrin

**FINISH**

Black coated

**PRODUCT CODE**

|            |          |   |          |   |           |   |          |
|------------|----------|---|----------|---|-----------|---|----------|
| <b>600</b> | <b>1</b> | - | <b>2</b> | - | <b>00</b> | - | <b>3</b> |
| GROUP CODE | MATERIAL |   | FINISH   |   | HEIGHT    |   | VERSION  |

|                 |          |               |          |
|-----------------|----------|---------------|----------|
| <b>MATERIAL</b> | <b>M</b> | <b>FINISH</b> | <b>F</b> |
| Zamak           | 1        | Black coated  | 2        |

## HVAC HINGE - ADJUSTABLE (2D)

600

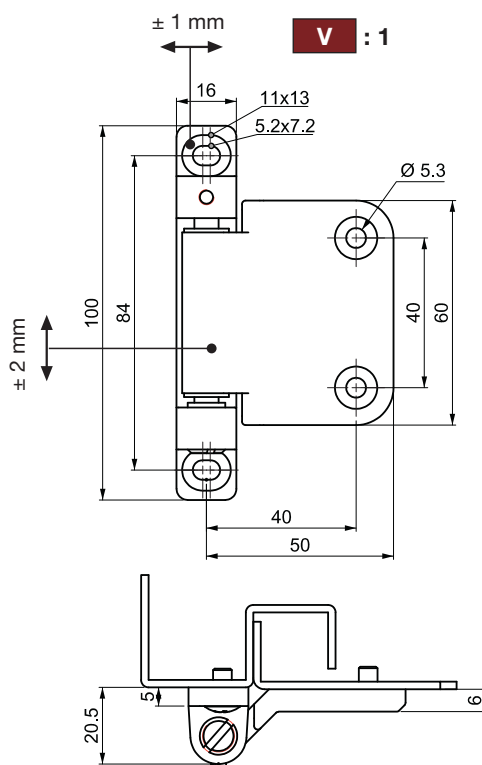


New



LH/RH

2 D



- Design for plain flush mounted doors
- Hinge is supplied totally assembled to decrease the customer labour costs.
- 2 dimensional door adjustments are possible.
- Axial adjustment is  $\pm 2$  mm .Radial adjustment is  $\pm 1$  mm.
- Also can be used for offset doors.  
Please look at corner hinges section.

## APPLICATIONS

Air condition central units, electric panels, machinery covers

## MATERIAL

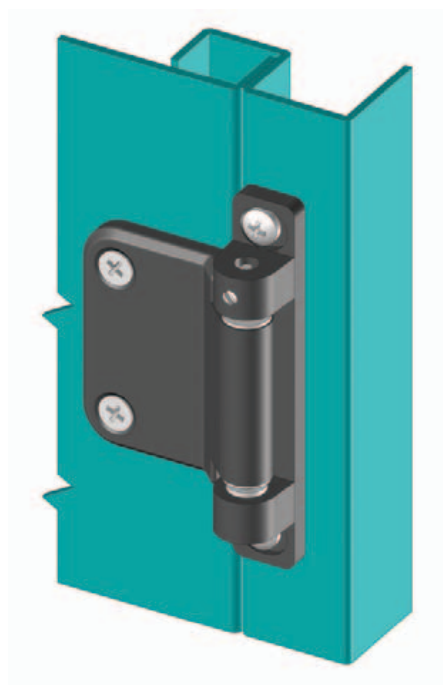
BODY : Zamak DIN-EN 1774-ZnAl4Cu1

PIN : Steel

BEARING : Delrin

## FINISH

Black coated

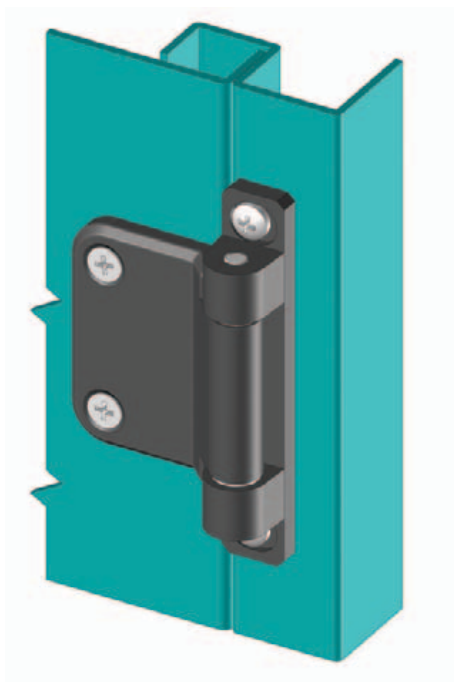
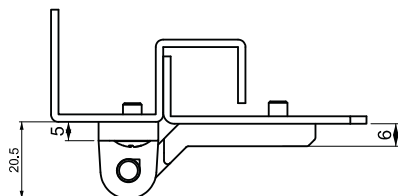
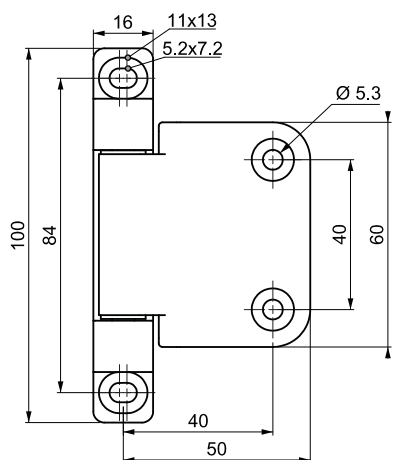


## PRODUCT CODE

|            |          |   |        |   |        |   |         |
|------------|----------|---|--------|---|--------|---|---------|
| 600        | 1        | - | 2      | - | 00     | - | 1       |
| GROUP CODE | MATERIAL |   | FINISH |   | HEIGHT |   | VERSION |

| MATERIAL | M | FINISH       | F |
|----------|---|--------------|---|
| Zamak    | 1 | Black coated | 2 |

**V : 2**



**600**

**HVAC HINGE**

**New**



**LH/RH**



- Design for plain flush mounted doors
- Hinge is supplied totally assembled to decrease the customer labour costs.
- Also can be used for offset doors. Please look at corner hinges section.

**APPLICATIONS**

Air condition central units, electric panels, machinery covers

**MATERIAL**

BODY : Zamak DIN-EN 1774-ZnAl4Cu1  
PIN : Steel  
BEARING : Delrin

**FINISH**

Black coated

**PRODUCT CODE**

**600** - **1** - **2** - **00** - **2**  
GROUP CODE MATERIAL FINISH HEIGHT VERSION

| MATERIAL | M | FINISH       | F |
|----------|---|--------------|---|
| Zamak    | 1 | Black coated | 2 |

## HVAC HINGE - ADJUSTABLE (2D)

700

New



LH/RH

2 D



- Design for plain side mounted doors.
- Hinge is supplied totally assembled to decrease the customer labour costs.
- 2 dimensional door adjustments are possible.
- Axial adjustment is  $\pm 2$  mm .Radial adjustment is  $\pm 1$  mm.
- Also can be used for offset doors.  
Please look at corner hinges section.

## APPLICATIONS

Air condition central units, electric panels, machinery covers

## MATERIAL

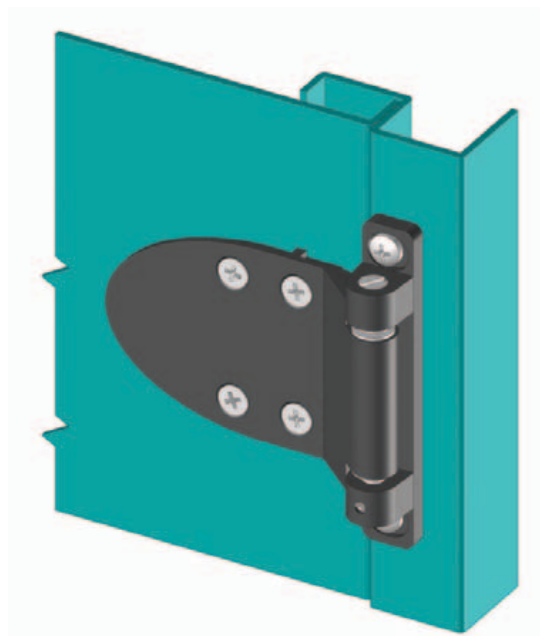
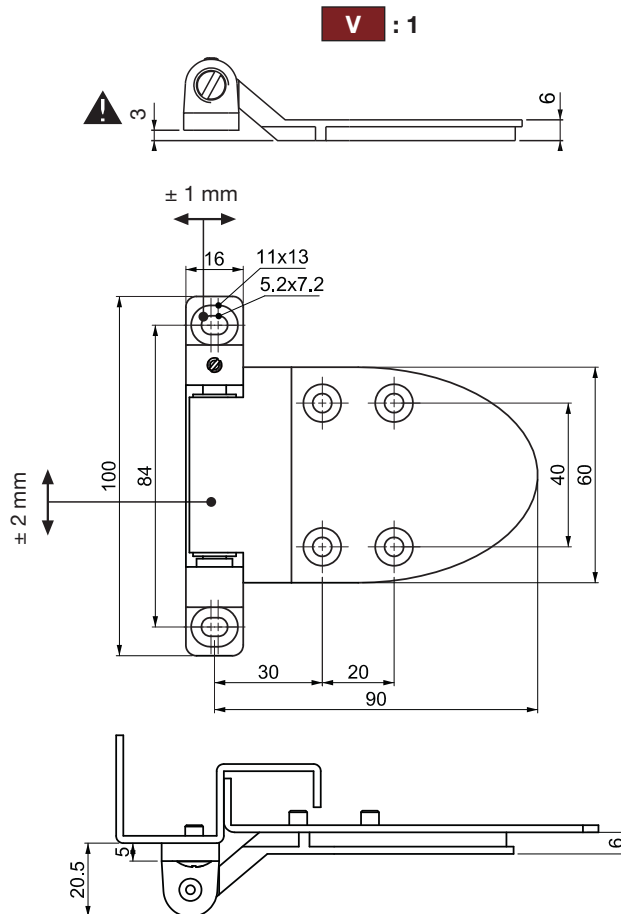
BODY : Zamak DIN-EN 1774-ZnAl4Cu1

PIN : Steel

BEARING : Delrin

## FINISH

Black coated

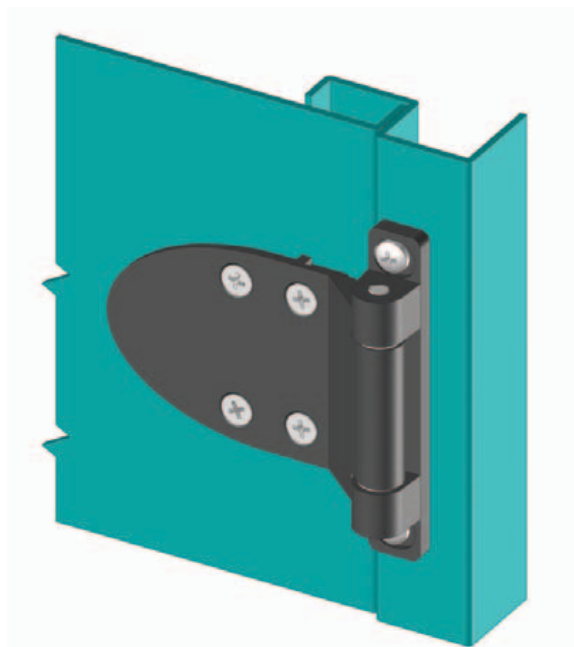
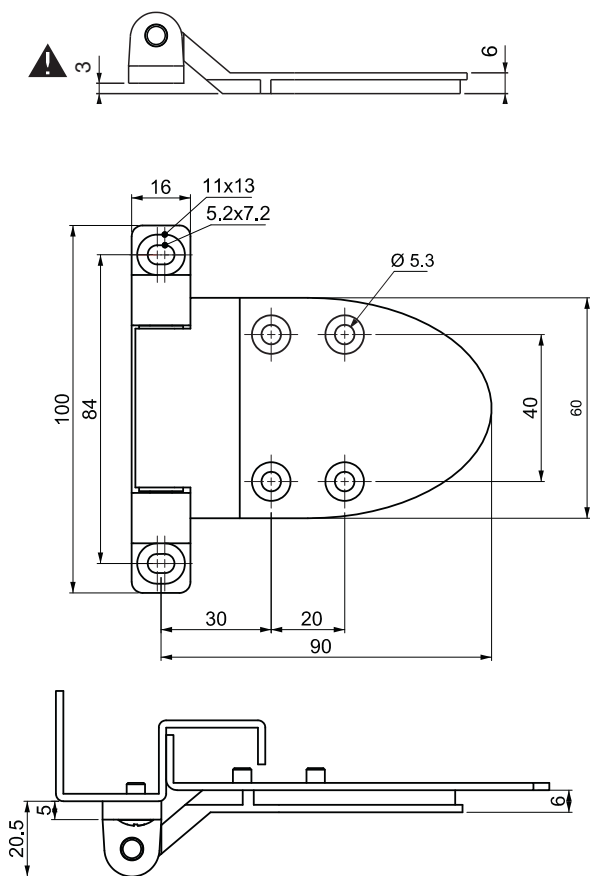


## PRODUCT CODE

|            |          |   |        |   |        |   |         |
|------------|----------|---|--------|---|--------|---|---------|
| 700        | 1        | - | 2      | - | 00     | - | 1       |
| GROUP CODE | MATERIAL |   | FINISH |   | HEIGHT |   | VERSION |

|                 |          |               |          |
|-----------------|----------|---------------|----------|
| <b>MATERIAL</b> | <b>M</b> | <b>FINISH</b> | <b>F</b> |
| Zamak           | 1        | Black coated  | 2        |

**V : 2**



**700**

**HVAC HINGE**

**New**



**LH/RH**



- Design for plain side mounted doors.
- For side mounted doors with a bend of 2-12 mm.
- Hinge is supplied totally assembled to decrease the customer labour costs.
- Also can be used for offset doors. Please look at corner hinges section.

**APPLICATIONS**

Air condition central units, electric panels, machinery covers

**MATERIAL**

BODY : Zamak DIN-EN 1774-ZnAl4Cu1  
PIN : Steel  
BEARING : Delrin

**FINISH**

Black coated

**PRODUCT CODE**

**700** - **1** - **2** - **00** - **2**  
GROUP CODE MATERIAL FINISH HEIGHT VERSION

| MATERIAL | M | FINISH       | F |
|----------|---|--------------|---|
| Zamak    | 1 | Black coated | 2 |

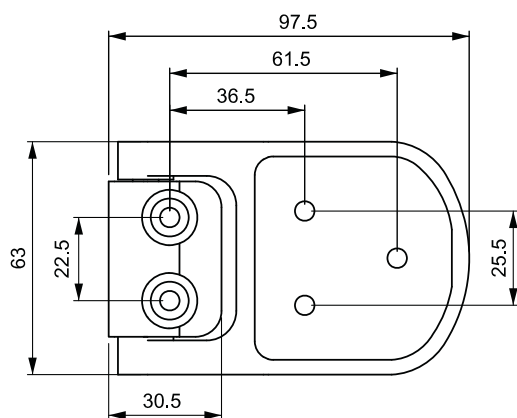


## HVAC HINGE

300



LH/RH

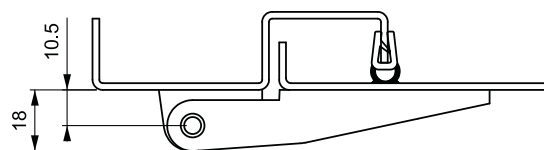


## APPLICATIONS

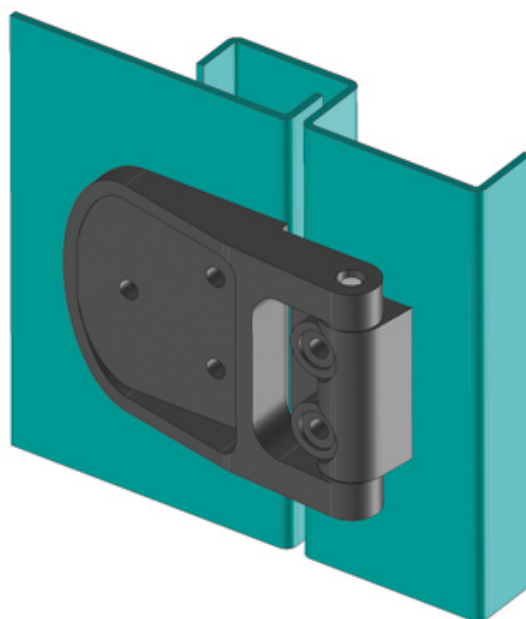
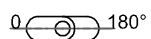
Air condition central units, electric panels,  
machinery covers

## MATERIAL

BODY: Polyamide DIN-EN ISO 1043-1  
PA 6 GFR 30  
PIN : Stainless Steel

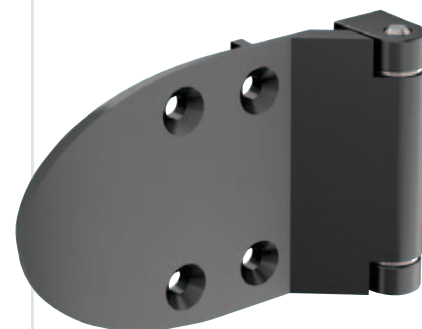
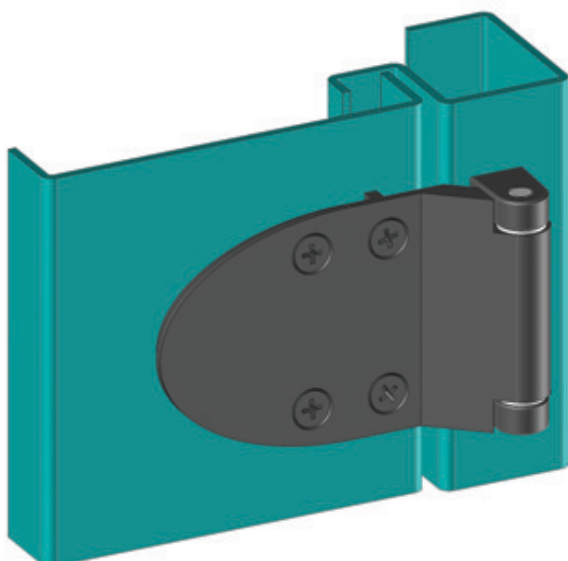
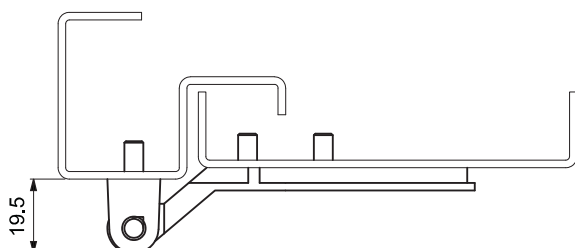
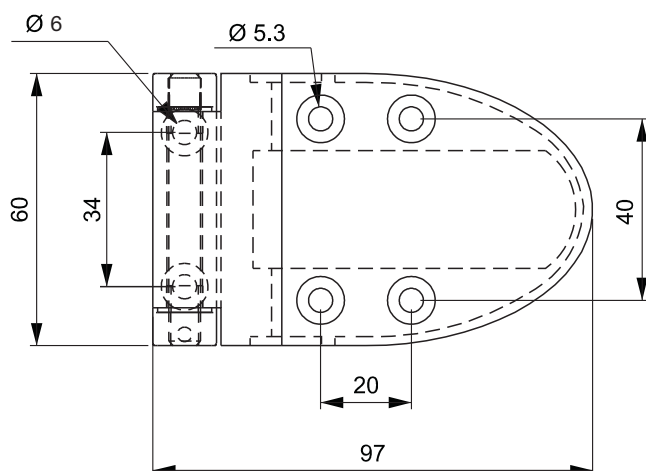
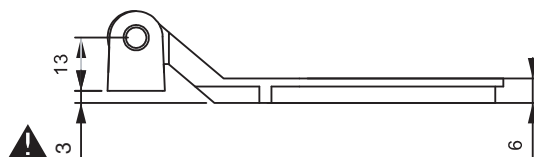


## Hinge Rotation Angle



**500**

**HVAC HINGE**



- Generally, used for plain / flush mounted, isolated, heavy doors.
- Specially designed for air conditioning (HVAC) central units.
- Stylish design. Supplied with polyamide hinge cover. Stainless steel (AISI 304) hinge pin.

#### APPLICATIONS

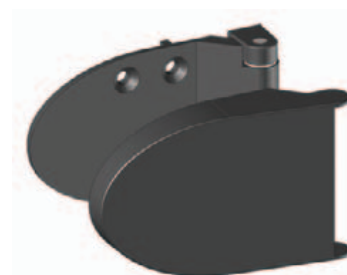
Air condition central units, electric panels, machinery covers

#### MATERIAL

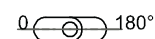
BODY : Zamak DIN-EN 1774-ZnAl4Cu1  
PIN : Stainless Steel  
BEARING : Delrin  
COVER : PA6 GFR 30

#### FINISH

Black coated



**Hinge Rotation Angle**

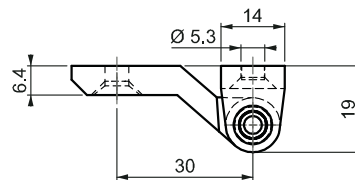
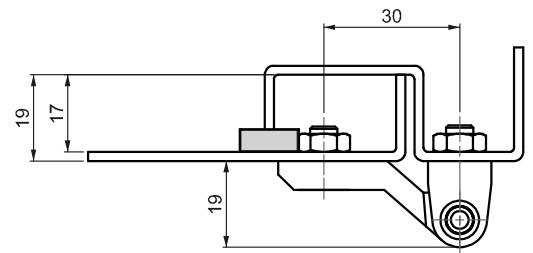
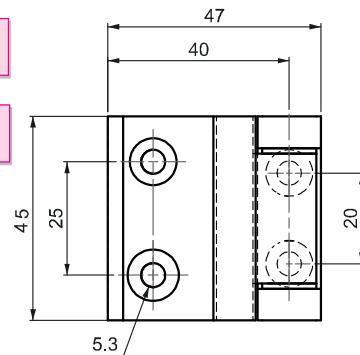


## HINGE WITH BEARING

100



LH/RH



## APPLICATIONS

Electric panels, machinery covers

## MATERIAL

BODY : Zamak DIN-EN 1774-ZnAl4Cu1

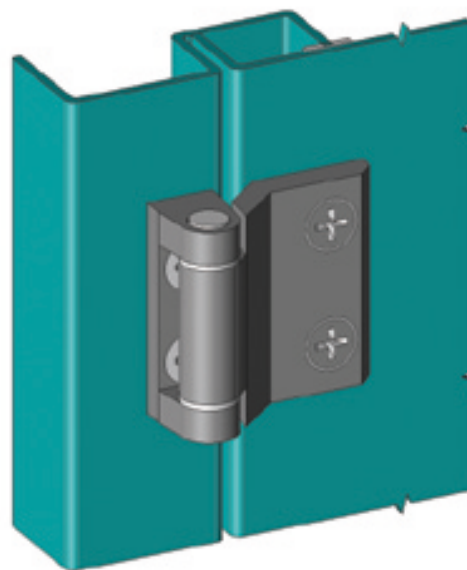
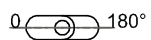
PIN : Steel

BEARING : Delrin

## FINISH

Black coated

## Hinge Rotation Angle



## PRODUCT CODE

100

1

2

00

GROUP CODE

MATERIAL

FINISH

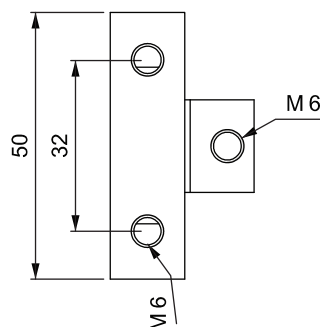
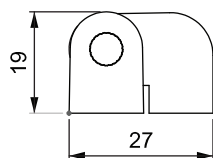
HEIGHT

| MATERIAL | M |
|----------|---|
| Zamak    | 1 |

| FINISH       | F |
|--------------|---|
| Black Coated | 2 |

**693**

**HINGE WITH BEARING**



**LH/RH**



**APPLICATIONS**

Electric panels, machinery covers

**MATERIAL**

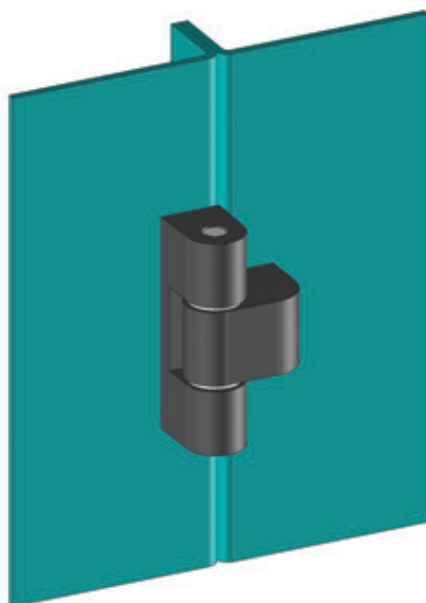
BODY : Zamak DIN-EN 1774-ZnAl4Cu1

PIN : Stainless steel

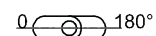
BEARING : Delrin

**FINISH**

Chrome plated or black coated



**Hinge Rotation Angle**



**PRODUCT CODE**

|            |          |   |          |   |          |
|------------|----------|---|----------|---|----------|
| <b>693</b> | <b>1</b> | - | <b>F</b> | - | <b>2</b> |
| GROUP CODE | MATERIAL |   | FINISH   |   | VERSION  |

| MATERIAL | M | FINISH       | F |
|----------|---|--------------|---|
| Zamak    | 1 | Chrome       | 1 |
|          |   | Black Coated | 2 |