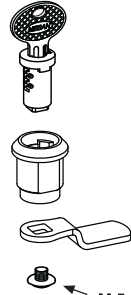
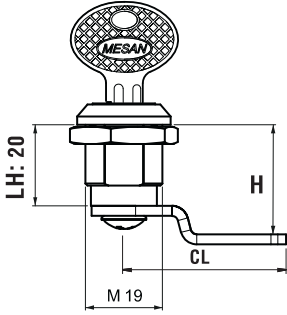


250

SİLİNDİRLİ KİLİT
CAM LOCK



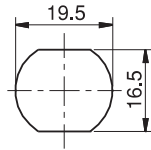
ANAHTAR DÖNME AÇISI
KEY ROTATION ANGLE



DİL GRUBU
CAM GROUP



M 5 Civata / Screw



Geçiş Ölçüsü
Cut Out



UYGULAMA ALANLARI

Çelik masa, çelik dolap, posta kutusu ve makina kapakları

MALZEME

KOVAN : Zamak DIN-EN 1774-ZnAl4Cu1

DİL : Çelik

YÜZEY : Krom

APPLICATIONS

Briefcases, steel drawers, machinery covers

MATERIAL

HOUSING : Zamak DIN-EN 1774-ZnAl4Cu1

CAM : Steel

FINISH : Chrome

ÜRÜN KODU / PRODUCT CODE

| | | | | | |
|-------------------------|---------------------------------|---|------------------|---|------------|
| 250 | 20 | - | DD | - | CC |
| GRUP KODU GROUP CODE | KOVAN BOYU HOUSING LENGTH | | FİŞE CYLINDER | | DİL CAM |

| Fişe / Cylinder | ÖZELLİKLER / SPECIFICATIONS | DD |
|-----------------|---|----|
| | Aynı şifre (Birbirini açan) / Keyed alike | 01 |
| | Farklı şifre (Birbirini açmayan) / Keyed differ | 02 |